



Plan to Empower.

REPORT



Strongsville City School District
Cuyahoga County

Enrollment Projections
May 24, 2012

Strongsville City School District

INTRODUCTION

Based on a request from the Ohio School Facilities Commission, **DeJONG-HEALY** was contracted to develop enrollment projections for Strongsville City School District.

This report contains ten-year enrollment projections for the Strongsville City School District. Enrollment projections were developed by analyzing the following data:

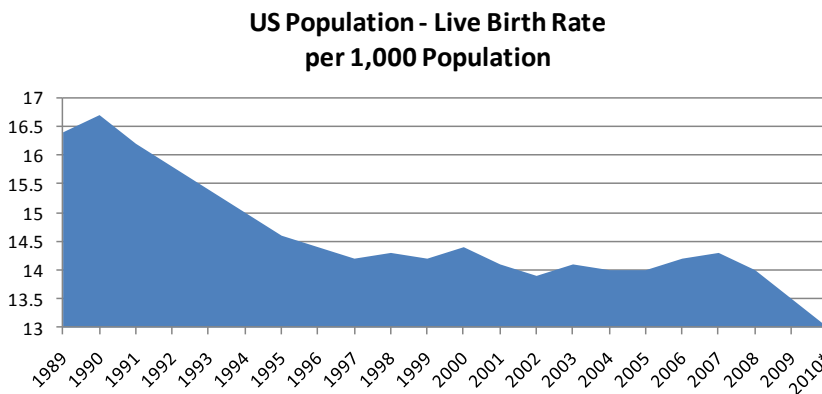
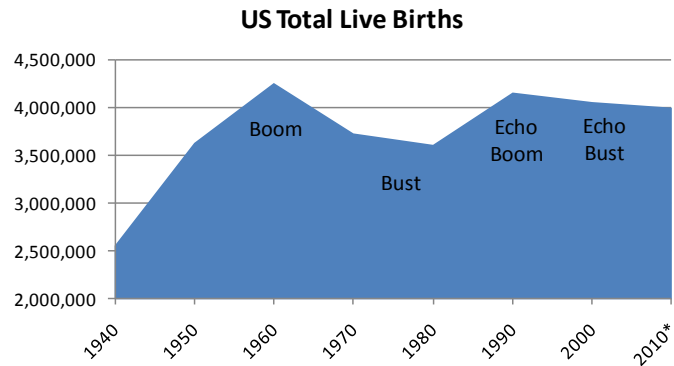
- ▶ Live birth data
- ▶ Historical enrollment
- ▶ Community school enrollment
- ▶ Open enrollment
- ▶ Community demographics
- ▶ Housing information

The projections presented in this report are meant to serve as a planning tool for the future, and, with the historical data and anticipated growth, represent the most likely direction of the District.

ENROLLMENT PROJECTION METHODOLOGIES

Introduction

Tracing the landscape of the country's public school enrollment back over the past fifty years reveals demographic, economic, and social changes. The United States as a whole continues to undergo major shifts in public student enrollment, due in large part to past events including the baby boom, the availability and use of birth control, and the development of suburbs. The baby boom of the late 1940s and 50s was followed by the baby bust of the 1960s and 70s. This gave rise to the echo baby boom of the 1980s, producing children who primarily graduated in the late 90s through 2007.



Nationwide, districts continue to experience the effects of the echo baby bust of the 1990s. From the 1950s to the 1970s, a dramatic downsizing of the family unit occurred. A direct result was the declining school enrollment of the 1970s and 1980s. As of the 2010 Census, the size of a family was at

an all-time low of 3.14 persons. The live birth rate increased for the first time in several years in 1998 and increased again in 2000. However, the birth rate resumed a descending pattern in 2001 and reached an all-time low of 13.0 in 2010.

Strongsville City School District

When projecting future enrollments, it will be vital to track the number of live births, the amount of new housing activity, and the change in household composition.

In addition, any of the following factors could cause a significant change in projected student enrollments:

- ▶ Boundary adjustments
- ▶ New school openings
- ▶ Changes/additions in program offerings
- ▶ Preschool programs
- ▶ Change in grade configuration
- ▶ Interest rates/unemployment shifts
- ▶ Magnet/Charter/Private school opening or closure
- ▶ Zoning changes
- ▶ Unplanned new housing activity
- ▶ Planned, but not built, housing

Obviously, certain factors can be gauged and planned for far better than others. For instance, it may be relatively straightforward to gather housing data from local builders regarding the total number of lots in a planned subdivision and calculate the potential student yield. However, planning for changes in the unemployment rate, and how these may either boost or reduce public school enrollment, proves more difficult. In any case, it is essential to gather a wide variety of information in preparation for producing enrollment projections.

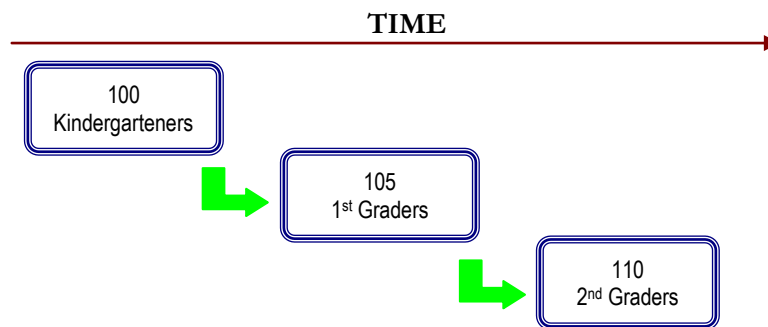
When looking ahead at a school district's enrollment over the next two, five, or ten years, it is helpful to approach the process from a global perspective. For example: How many new homes have been constructed each year? How many births have occurred each year in relation to the resident population? Is housing experiencing a turnover – if so, what is the composition of families moving in/out? Are more or less students attending private school or being home-schooled? What has the unemployment rate trend been over the past ten years? What new educational policies are in place now that could affect student enrollment figures?

The data sets generated from questions such as these have led to the development of general methodologies to project future student enrollments. They are as follows:

Strongsville City School District

Cohort Survival Method

A cohort is a group of persons [in this case, students]. The cohort survival projection methodology uses previous live birth data and historical student enrollments to “age” a known population or cohort throughout the school grades. For instance, a cohort begins when a group of kindergarteners enrolls in grade K and moves to first grade the following year, second grade the next year, and so on.



A “survival ratio” is developed to track how this group of students grew or shrunk in number as they moved through the grade levels. By determining survival ratios for each grade transition [i.e., 1st to 2nd grade] over a ten-year period of time, patterns emerge and projection ratios can be developed to be used as a multiplier.

For example, if student enrollment has consistently increased from the 8th to the 9th grade over the past ten years, the survival ratios for each year would be greater than 100 percent. Through analysis of the survival ratios, the projection ratio is determined and is multiplied by the current 8th grade to develop a projection for next year's 9th grade.

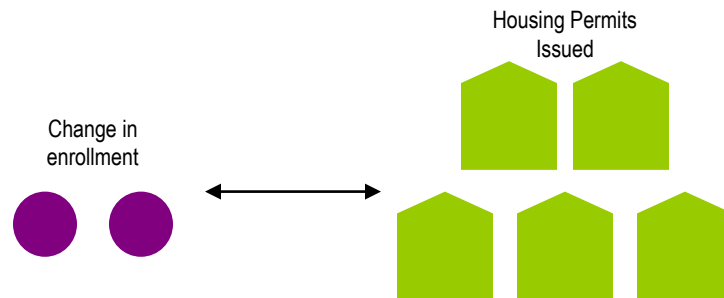
This methodology can be carried through to develop ten years of projection figures. Because there is not a grade cohort to follow for students coming into kindergarten, live birth counts are used to develop a survival ratio. Babies born five years previous to the kindergarten class are compared in number, and a ratio can be developed to project future kindergarten enrollments.

The cohort survival method is useful in areas where population is stable [relatively flat, growing steadily, or declining steadily], and where there have been no significant fluctuations in enrollment, births, and housing patterns from year to year.

Strongsville City School District

Housing

Enrollment projections can also be determined by analyzing the housing data for the areas that make up a school district. Yield factors can be established by comparing the historic change in enrollment from year to year divided by the total number of building or occupancy permits issued. For example, if student enrollment has increased by approximately 100 students each year and approximately 200 building permits have been issued each year for the past ten years, then the yield factor would be approximately .5 students per building permit.



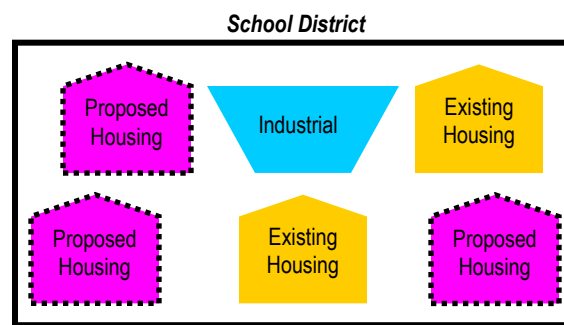
Once yield factors are established, the number of new students per year can be estimated by multiplying the yield factor by the number of projected new housing units. This method is effective when the rate of kindergarten enrollment far exceeds the live birth counts.

If housing demolitions are occurring in a district, these must also be taken into account. For instance, if housing demolitions/withdrawals have increased rapidly over recent years while new housing starts have remained relatively constant over many years, the conclusion may be that some of the new housing starts will simply be replacements for the families displaced by the demolitions. Of course, housing value and household composition would need to be further analyzed to confirm that this is indeed the case. It is possible that enrollment may remain flat or decline even though there is new housing occurring in the area.

Strongsville City School District

Land-Saturation Analysis

Housing data also drives the land-saturation analysis enrollment methodology. In areas where there is a high rate of development and the future development patterns in the area are clear, a “build-out” scenario can be developed. The scenario takes into consideration the remaining acreage to be developed, planned rate of completion, zoning policies, density per acre, type of housing, and ratios of school-age children per household type. This method is particularly useful in areas experiencing rapid growth.

**Geographic Information Systems**

While not a methodology, the need for better tools and easier manipulation of data has led to a new industry standard in planning – GIS [Geographic Information Systems]. GIS technology allows school districts to quickly analyze countless data sets including birth data, housing information, and enrollment statistics.

When paired with enrollment projections, GIS becomes an invaluable information-management and decision-making tool. Often, county or city offices are already implementing GIS technology and data can be shared and expanded among these organizations in the district. GIS tables and maps are included within this report illustrating population, age, and income estimates and projections.

The cohort survival was the primary method used in the development of the enrollment projections for the Strongsville City School District.

Strongsville City School District

HISTORICAL ENROLLMENT

Over the past ten years, student enrollment in the Strongsville City School District has decreased by 614 students in grades Pre-K – 12, including ungraded, career technical, and full-time JVS students. Total enrollment for the 2011-12 school year is 6,546 students.

The approximate percentages of mainstreamed special education students [Pre-K – 12] for the current school year are as follows:

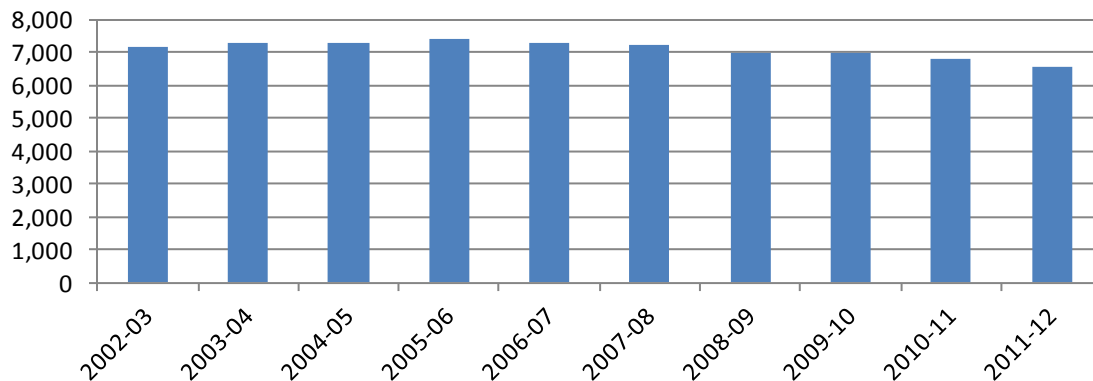
- Pre-K – 80%
- K-12 – 9%

The approximate percentages of self-contained special education students [Pre-K – 12] for the current school year are as follows:

- Pre-K – 0%
- K-12 – 1%

The following graph illustrates the District's Pre-K – 12 enrollment history from 2002-03 through 2011-12.

**Strongsville City School District
Historical Enrollment**



Strongsville City School District

The following table illustrates the District's enrollment history from 2002-03 through 2011-12.

**Strongsville City School District
Historical Enrollment**

Grade	2002-03	2003-04	2004-05	2005-06	2006-07	2007-08	2008-09	2009-10	2010-11	2011-12
Pre-K (regular)*	0	0	0	0	0	0	37	21	23	15
Pre-K (special needs)	0	0	0	82	73	65	58	78	64	59
K	444	427	445	433	392	408	325	381	300	319
1	481	508	485	504	496	459	468	403	462	379
2	495	498	519	493	501	484	445	460	397	466
3	547	528	505	519	485	510	490	458	453	397
4	556	554	536	519	521	494	507	488	467	458
5	543	573	565	538	515	535	494	505	503	466
6	583	558	573	577	553	524	546	505	518	509
7	588	592	579	604	594	579	555	580	525	532
8	552	607	596	567	626	598	580	557	589	512
9	655	615	647	668	618	672	649	621	608	613
10	603	639	611	643	642	602	632	641	603	602
11	544	535	589	465	496	504	473	509	482	446
12	500	540	539	496	465	499	488	452	490	465
Pre-K - 12 Total	7,091	7,174	7,189	7,108	6,977	6,933	6,747	6,659	6,484	6,238
Ungraded	16	16	19	25	25	0	0	19	22	14
Career Tech Comprehensive - Low Bay	53	87	87	96	107	85	86	80	109	120
Career Tech Off-Site	0	0	0	123	107	129	136	173	168	174
JVS Full-Time	0	0	0	50	37	36	28	11	2	0
Grand Total	7,160	7,277	7,295	7,402	7,253	7,183	6,997	6,942	6,785	6,546

Source: Ohio Department of Education, EMIS; Strongsville City School District

**Strongsville City School District
Historical Enrollment by Grade Group**

Grade	2002-03	2003-04	2004-05	2005-06	2006-07	2007-08	2008-09	2009-10	2010-11	2011-12
Pre-K (special needs) - 5	3,066	3,088	3,055	3,088	2,983	2,955	2,787	2,773	2,646	2,544
6 - 8	1,723	1,757	1,748	1,748	1,773	1,701	1,681	1,642	1,632	1,553
9 - 12	2,302	2,329	2,386	2,272	2,221	2,277	2,242	2,223	2,183	2,126
Pre-K - 12 Total	7,091	7,174	7,189	7,108	6,977	6,933	6,710	6,638	6,461	6,223
Ungraded	16	16	19	25	25	0	0	19	22	14
Career Tech Comprehensive - Low Bay	53	87	87	96	107	85	86	80	109	120
Career Tech Off-Site	0	0	0	123	107	129	136	173	168	174
Grand Total	7,160	7,277	7,295	7,352	7,216	7,147	6,932	6,910	6,760	6,531

Source: Ohio Department of Education, EMIS; Strongsville City School District

*regular Pre-K and full-time JVS enrollment are not included in the projected enrollment figures.

Strongsville City School District

COMMUNITY SCHOOL ENROLLMENT

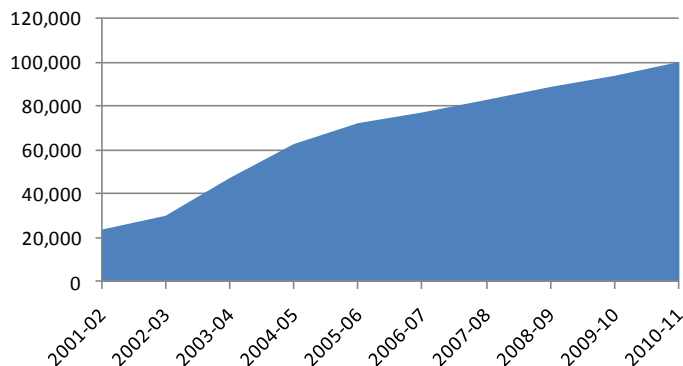
In Ohio, community school enrollment has increased dramatically over the last decade. From 2001-02 to 2010-11, enrollment has increased from 23,626 students in 98 community schools to 99,878 students in 341 community schools.

Ohio
Community School Enrollment

Grade	2001-02	2002-03	2003-04	2004-05	2005-06	2006-07	2007-08	2008-09	2009-10	2010-11
Grand Total	23,626	29,939	47,101	62,561	72,064	76,932	82,643	88,536	93,623	99,878

Source: Ohio Department of Education

Ohio Community School Enrollment

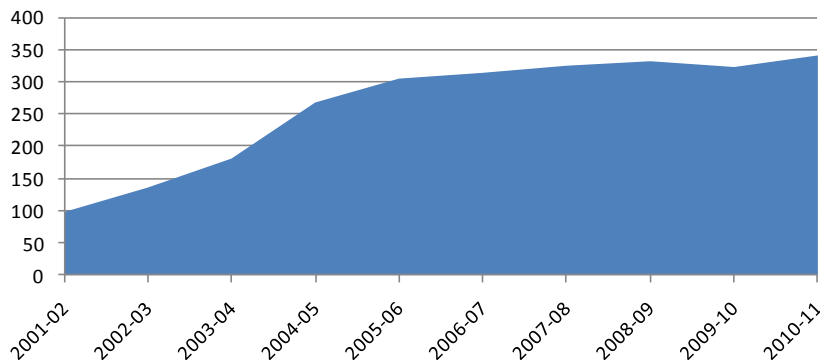


Ohio
Number of Community Schools

Grade	2001-02	2002-03	2003-04	2004-05	2005-06	2006-07	2007-08	2008-09	2009-10	2010-11
Grand Total	98	136	181	268	305	314	325	332	323	341

Source: Ohio Department of Education

Number of Community Schools in Ohio



Strongsville City School District

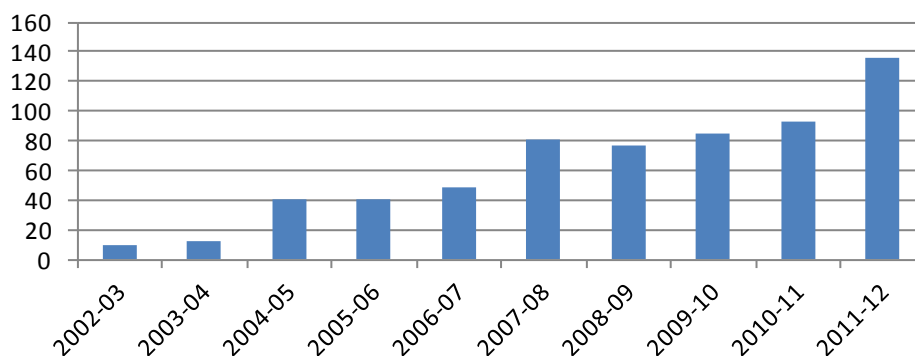
Since 2002-03, the number of Strongsville City School District students attending community schools has increased from 10 to 136 students. Enrollment of Strongsville City School District students attending community schools should be closely monitored as it may have a significant impact on District enrollment in the future.

**Strongsville City School District
Community School Enrollment**

Grade	2002-03	2003-04	2004-05	2005-06	2006-07	2007-08	2008-09	2009-10	2010-11	2011-12
Pre-K	0	0	0	0	0	0	0	0	0	0
K	0	2	3	3	1	3	2	5	2	12
1	2	2	0	0	2	2	0	2	8	2
2	0	1	4	4	3	4	1	2	2	9
3	1	1	3	3	1	5	1	2	3	6
4	1	0	1	1	2	2	5	2	1	5
5	0	1	1	1	1	1	2	5	1	5
6	0	1	1	1	1	1	1	1	7	1
7	1	0	3	3	1	4	3	1	1	8
8	1	0	0	0	0	6	3	3	5	9
9	3	0	6	6	14	19	15	13	11	18
10	0	2	5	5	8	14	13	18	15	13
11	1	1	7	7	3	10	17	14	18	22
12	0	1	4	4	8	8	9	16	15	18
Ungraded	0	0	2	2	3	2	4	1	4	8
Grand Total	10	12	40	40	48	81	76	85	93	136

Source: Ohio Department of Education, EMIS; Strongsville City School District

**Strongsville City School District
Students Attending Community Schools**



Strongsville City School District

OPEN ENROLLMENT

Since 2004-05, the number of Strongsville City School District students “open enrolling” into the District has fluctuated between 0 and 1 student in the 2011-12 school year. The number of students “open enrolling” out of the District has fluctuated between 5 and 20 students. Significant changes in the number of students “open enrolling” into or out of the District from year to year can impact enrollment projections and should be monitored.

Strongsville City School District**Open Enrollment - IN**

Grade	2004-05	2005-06	2006-07	2007-08	2008-09	2009-10	2010-11	2011-12
Pre-K	0	0	0	0	0	0	0	0
K	0	0	0	1	0	0	0	0
1	0	0	0	0	1	0	0	0
2	0	0	0	0	0	1	0	0
3	0	0	0	0	0	0	0	0
4	0	0	0	0	0	0	0	0
5	0	0	0	0	0	0	0	0
6	0	0	0	0	0	0	0	0
7	0	0	0	0	0	0	0	0
8	0	0	0	0	0	0	0	0
9	0	0	0	0	0	0	0	0
10	0	0	0	0	0	0	0	0
11	0	0	0	0	0	0	0	0
12	0	0	0	0	0	0	0	0
Ungraded	0	0	0	0	0	0	0	0
Grand Total	0	0	0	1	1	1	0	0

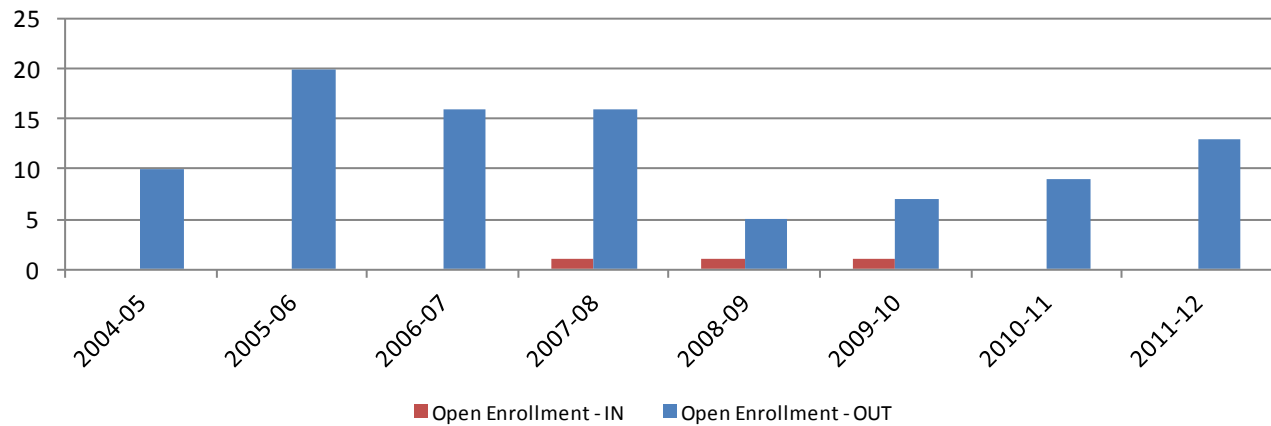
Source: Ohio Department of Education, EMS; Strongsville City School District

Strongsville City School District**Open Enrollment - OUT**

Grade	2004-05	2005-06	2006-07	2007-08	2008-09	2009-10	2010-11	2011-12
Pre-K	0	0	0	0	0	0	0	0
K	0	2	0	1	0	1	1	3
1	1	0	0	0	1	0	0	1
2	0	1	0	1	0	0	0	1
3	0	1	2	0	1	0	1	0
4	1	0	0	1	0	2	0	1
5	1	2	0	1	0	0	1	0
6	0	1	2	1	1	0	0	1
7	1	0	1	2	0	0	0	0
8	0	2	1	1	1	0	2	0
9	0	1	3	2	0	2	0	2
10	2	1	1	2	0	0	2	0
11	2	3	3	1	0	2	1	3
12	2	6	3	3	1	0	1	1
Ungraded	0	0	0	0	0	0	0	0
Grand Total	10	20	16	16	5	7	9	13

Source: Ohio Department of Education, EMS; Strongsville City School District

Strongsville City School District

**Strongsville City School District
Open Enrollment**

Strongsville City School District

LIVE BIRTH DATA

Utilization of live birth data is recommended when projecting future kindergarten enrollments as it provides a helpful overall trend. The live birth counts are used in determining a birth-to-kindergarten survival ratio. This ratio identifies the percentage of children born in a representative area who attend kindergarten in the District five years later. The survival ratios for birth-to-kindergarten as well as grades 1-12 can be found later in this report.

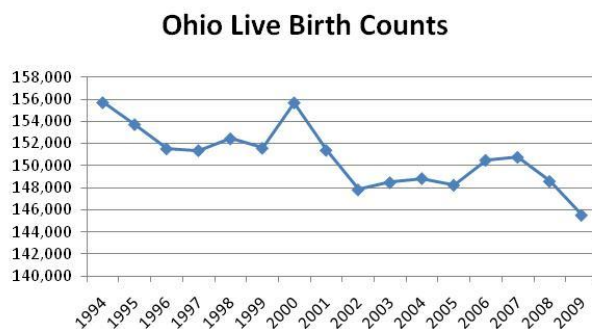
The Ohio Department of Health [ODH] data warehouse provides information about live birth events for Ohio residents. Information about events occurring outside of Ohio to Ohio residents is included. Information about events occurring inside Ohio to non-Ohio residents is not included.

Data is arranged by the residence of the mother. For example, if a mother lives in Powell, Delaware County but delivers her baby in Columbus, Franklin County, the birth is counted in Powell, Delaware County.

The number of live births is recorded by:

- ▶ State
- ▶ County
- ▶ City/Town
- ▶ Census Tract
- ▶ Zip Code
- ▶ Address [not available to the public]

Live birth counts are different from live birth rates. The live birth count is the actual number of live births. A birth rate is the number of births per 1,000 women in a specified population group. Birth rates are provided for counties only and for 9 age groups from 10-14 years to 45+ years.



a slight stabilization from 2002 to 2005. Births increased again in 2006 and 2007 but have since declined to an all-time low of 145,526 in 2009.

Strongsville City School District

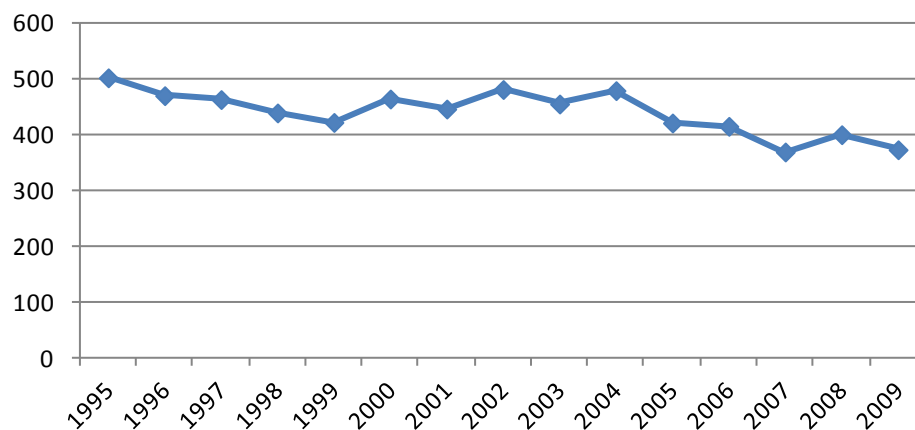
The following chart and graph include the live birth count for Strongsville, Ohio.

**Live Birth Count
1995-2009**

Year	Strongsville
1995	502
1996	470
1997	463
1998	439
1999	422
2000	464
2001	446
2002	481
2003	455
2004	479
2005	421
2006	415
2007	369
2008	400
2009	373

Source: Ohio Department of Health, Statistical Analysis Unit

**Strongsville City
Live Birth Count**



Strongsville City School District

DEMOGRAPHICS

The Strongsville City School District is comprised of Strongsville City in Cuyahoga County. General demographic data is included in the following tables for the areas located completely or partially in the District.

General Demographic Information

	Cuyahoga County
Per Capita Income (2010)	\$24,951
Median Household Income (2010)	\$41,347
Persons Below Poverty (2010)	17.9%

Source: US Census, American Community Survey

Total Population

	2000 Census	2010 Census
Cuyahoga County	1,393,978	1,280,122
Strongsville City	43,858	44,750

Source: ODOD Office of Strategic Research

Also included are block group estimates and projections provided by ESRI Business Information Solutions (ESRI BIS). ESRI BIS uses a time series of estimates from the U.S. Census Bureau that includes the latest estimates and intercensal estimates adjusted for error of closure. The Census Bureau's time series is consistent, but testing has revealed improved accuracy by using a variety of sources to track county population trends.

ESRI BIS also employs a time series of building permits and housing starts plus residential deliveries. Finally, local data sources that tested well against Census 2000 are reviewed. Data sources are integrated and then analyzed by Census Block Groups.

Sources of data include:

- ▶ Supplementary Surveys of the Census Bureau
- ▶ Bureau of Labor Statistics' (BLS) Local Area Unemployment Statistics
- ▶ BLS Occupational Employment Statistics
- ▶ InfoUSA
- ▶ U.S. Bureau of the Census' Current Population Survey
- ▶ National Planning Association Data Service

Strongsville City School District

Below is a list of definitions as they appear on the U.S. Census Bureau website, to aid in interpretation of the following tables and maps.

Household:

A household includes all the people who occupy a housing unit as their usual place of residence.

Average family size:

A measure obtained by dividing the number of members of families by the total number of families (or family householders).

Family household (Family):

A family includes a householder and one or more people living in the same household who are related to the householder by birth, marriage, or adoption. All people who are related to the householder are regarded as members of his or her family. A family household may contain people not related to the householder, but those people are not included as part of the householder's family in census tabulations. Thus, the number of family households is equal to the number of families, but family households may include more members than do families. A household can contain only one family for purposes of census tabulations. Not all households contain families since a household may comprise a group of unrelated people or one person living alone.

Householder:

The person, or one of the people, in whose name the home is owned, being bought, or rented. If there is no such person present, any household member 15 years old and over can serve as the householder for the purposes of the census. Two types of householders are distinguished: a family householder and a nonfamily householder. A family householder is a householder living with one or more people related to him or her by birth, marriage, or adoption. The householder and all people in the household related to him are family members. A nonfamily householder is a householder living alone or with nonrelatives only.

Strongsville City School District

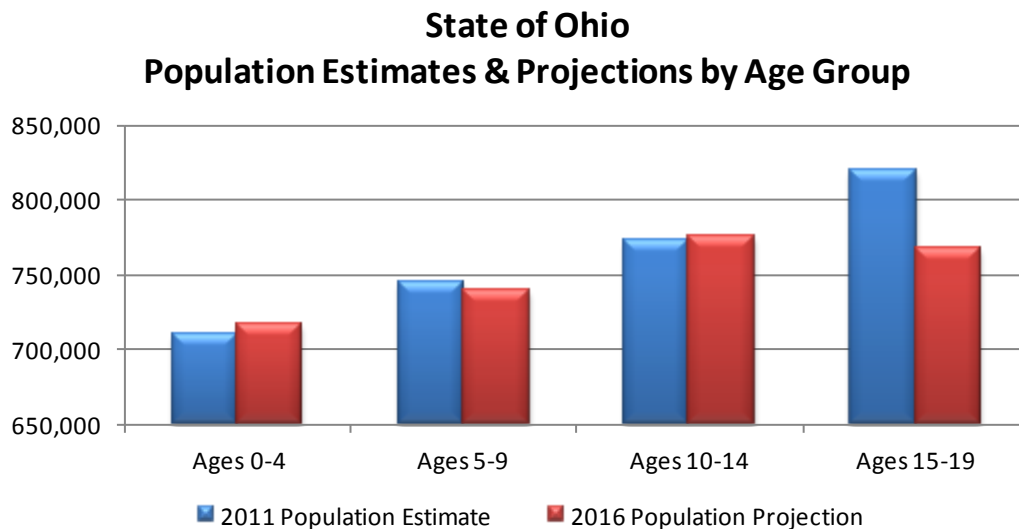
The following tables illustrate the current estimates and 5-year population projections based on block groups that comprise the state and school district, indicating areas of current and projected growth. The tables have been developed to determine selected age group projections and projections for household income, family size, and family income.

The total population in the State of Ohio is 11,538,102. This population is projected to increase by 57,804 people, or approximately 0.5% over a 5-year period. However, Ohio gained just 8,400 residents between 2010 and 2011, ranking the state 48th for growth, according to new population estimates from the U.S. Census.

The 0-19 year-old population in the State currently totals 3,047,034. This population is projected to decrease by 48,194 children, or approximately 2 percent.

State of Ohio	2011 Population Estimate	2016 Population Projection
Total Population	11,538,102	11,595,906
Ages 0-4	710,393	717,415
Ages 5-9	744,959	739,354
Ages 10-14	772,909	775,032
Ages 15-19	818,772	767,040
Total Ages 0-19	3,047,034	2,998,840

Source: ESRI BIS



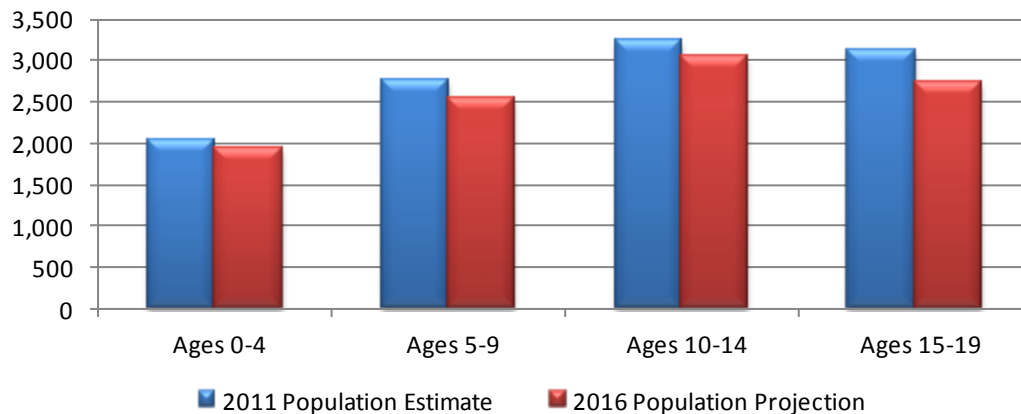
Strongsville City School District

The total population in the District is 44,231. This population is projected to decrease by 2,475 people, or approximately 6% over a 5-year period. The 0-19 year-old population in the District currently totals 11,141. This population is projected to decrease by 879 children, or approximately 8 percent.

Strongsville City School District	2011 Population Estimate	2016 Population Projection
Total Population	44,231	41,756
Ages 0-4	2,042	1,934
Ages 5-9	2,743	2,550
Ages 10-14	3,234	3,047
Ages 15-19	3,122	2,731
Total Ages 0-19	11,141	10,262

Source: ESRI BIS

**Strongsville City School District
Population Estimates & Projections by Age Group**



Strongsville City School District

Average household and family incomes in the State are projected to increase by 11% and 12%, respectively over a 5-year period. Average family size is projected to remain relatively the same.

State of Ohio	2011 Population Estimate	2016 Population Projection
Average Household Income	\$61,196	\$67,985
Average Family Size	3.01	3.00
Average Family Income	\$94,080	\$105,718

Source: ESRI BIS

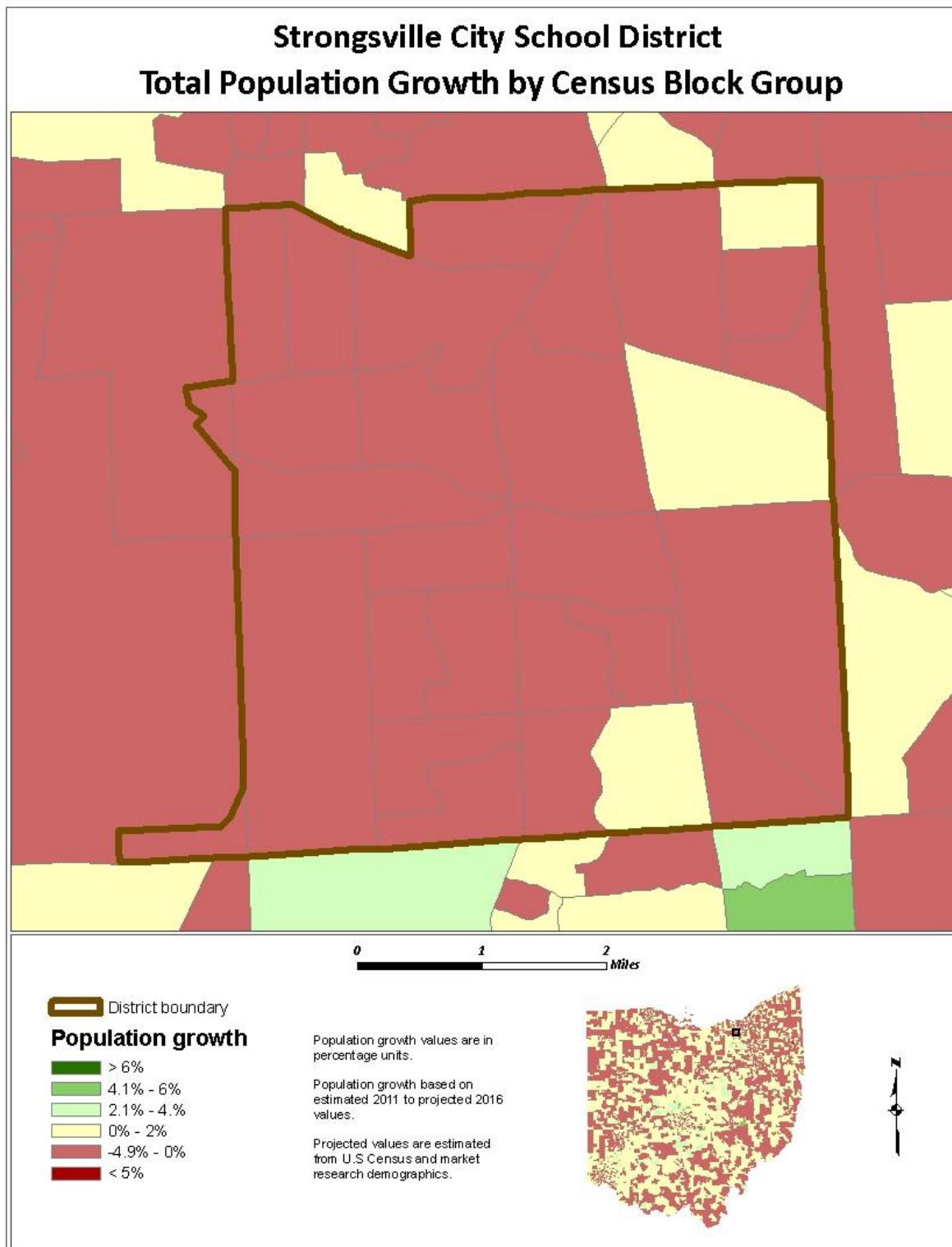
Average household and family incomes in the District are projected to increase by 12% and 13%, respectively over a 5-year period. Average family size is projected to remain relatively the same.

Strongsville City School District	2011 Population Estimate	2016 Population Projection
Average Household Income	\$89,436	\$100,521
Average Family Size	3.04	3.01
Average Family Income	\$125,455	\$142,158

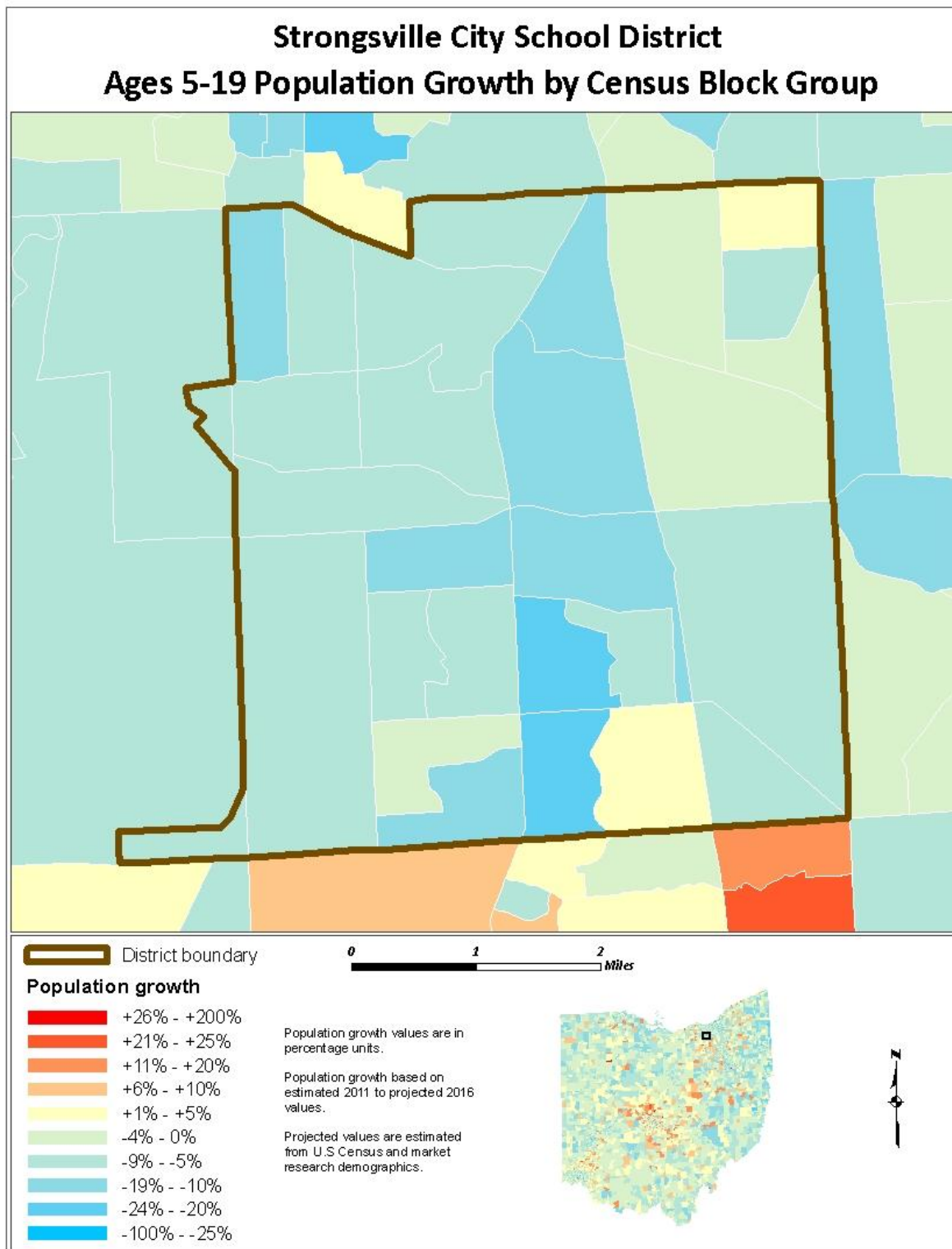
Source: ESRI BIS

The maps on the following pages illustrate the data identified in the tables. The color coding identifies areas within the District that may be increasing or decreasing at different rates than others.

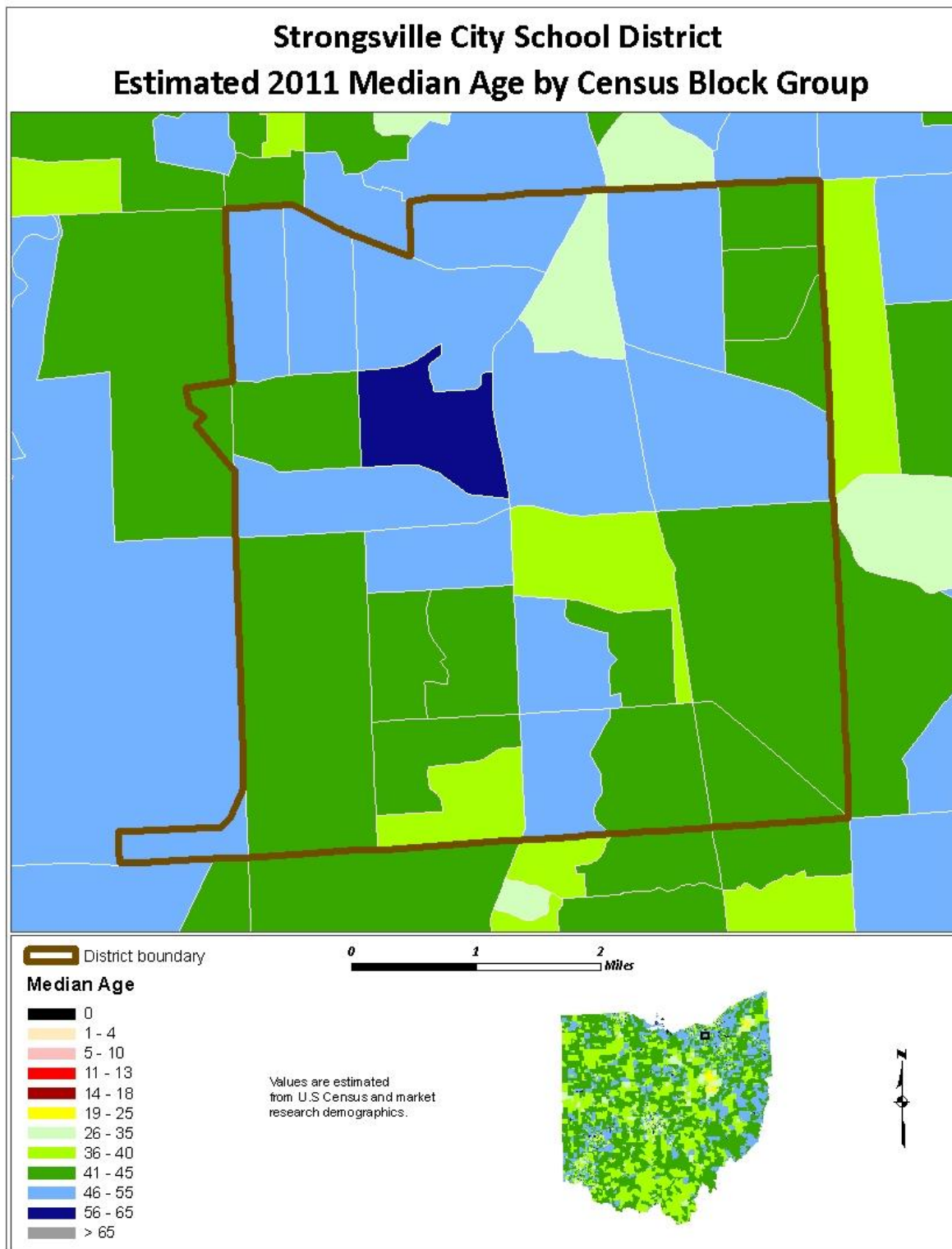
Strongsville City School District



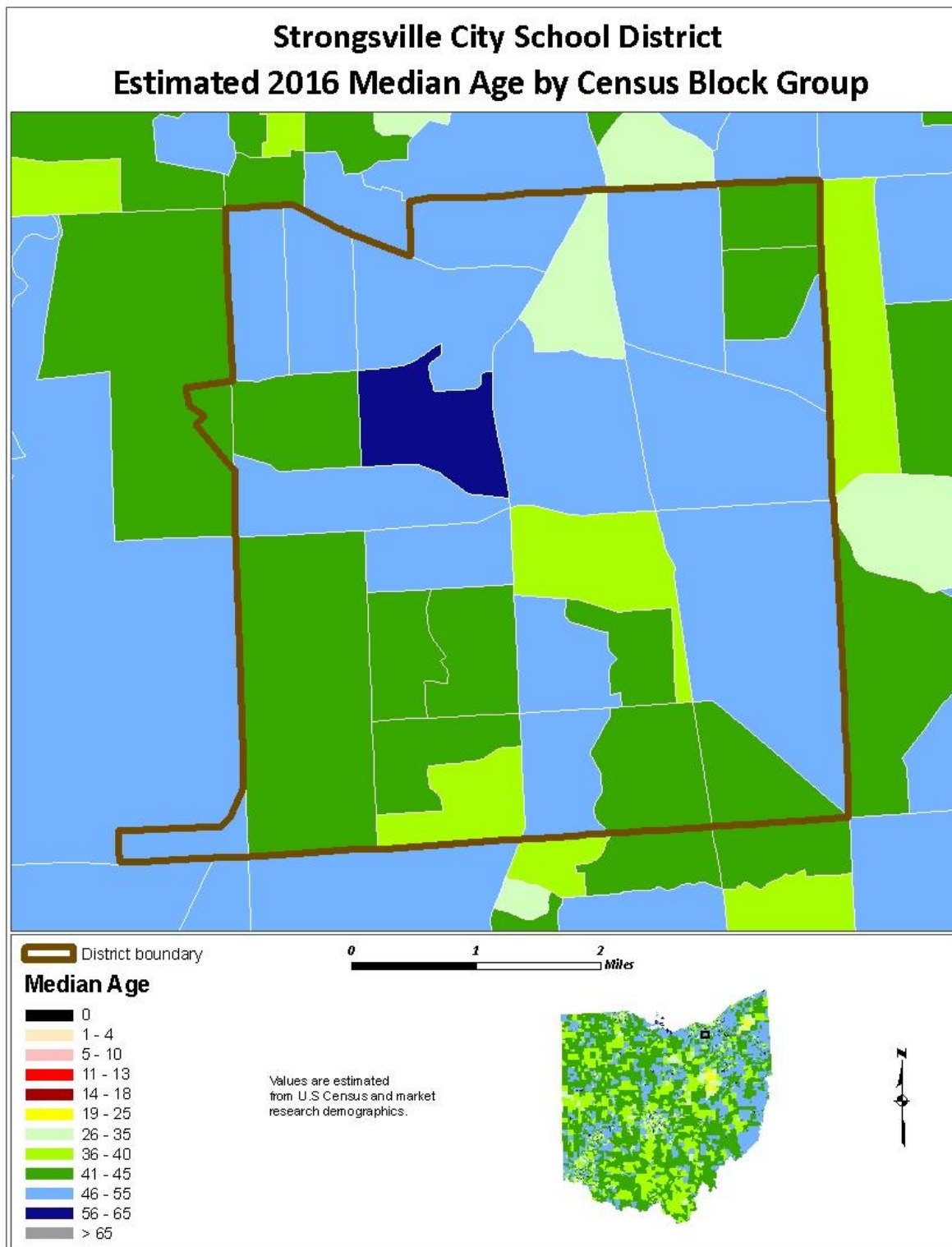
Strongsville City School District



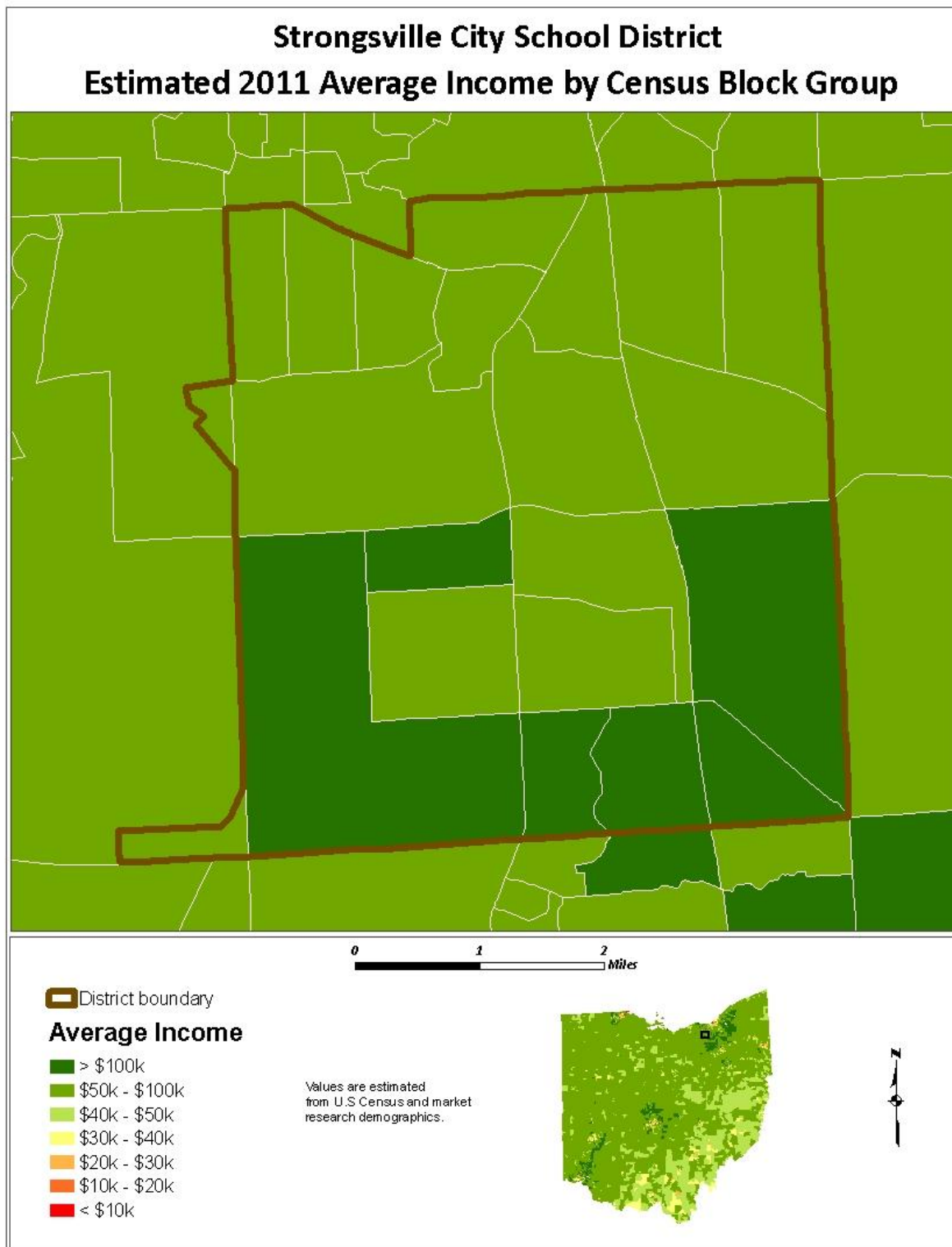
Strongsville City School District



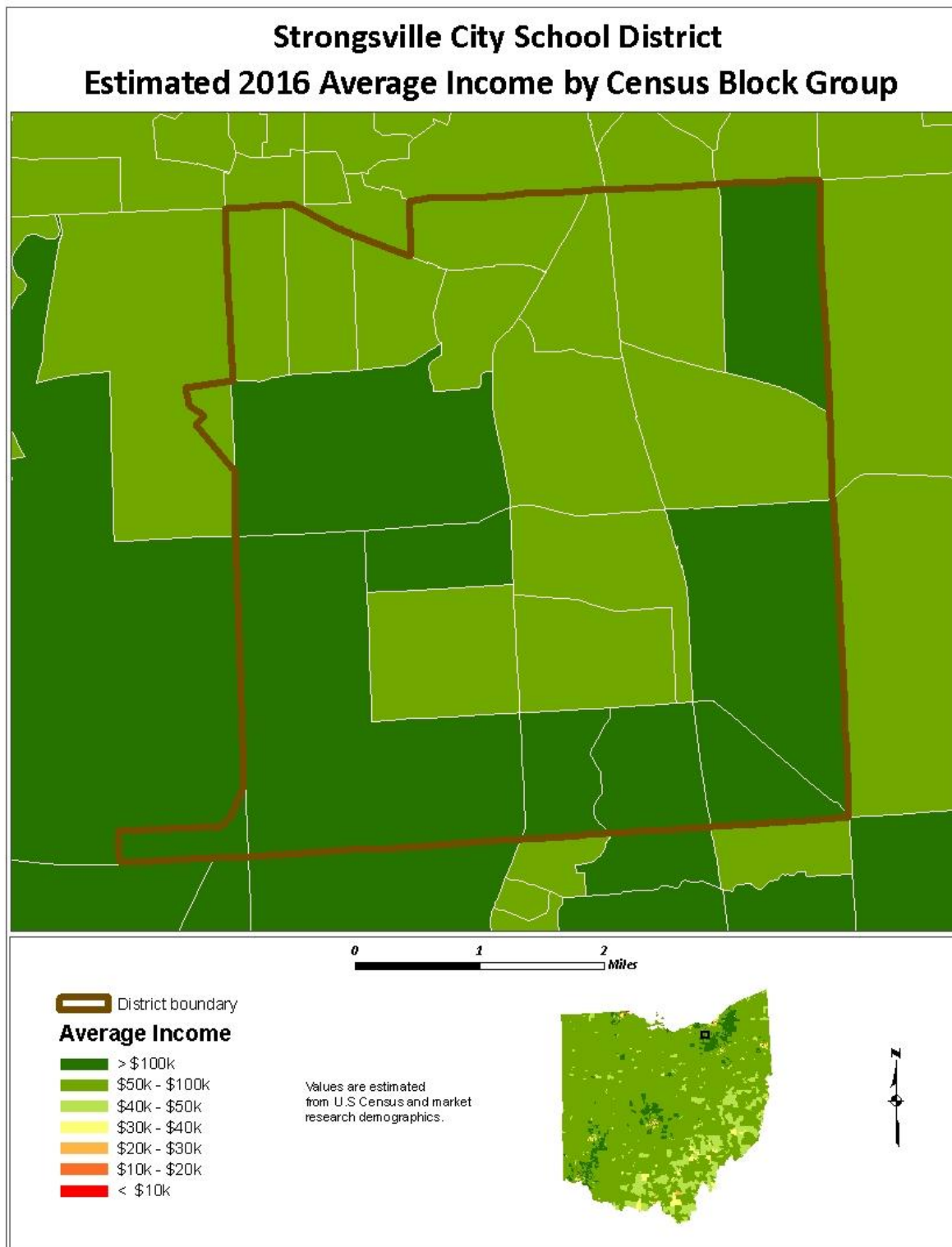
Strongsville City School District



Strongsville City School District



Strongsville City School District



Strongsville City School District

HOUSING INFORMATION

The chart below illustrates the number of single-family dwelling building permits issued each year in Strongsville City and Cuyahoga County.

of Building Permits Issued for Single Family Dwellings

Year	Strongsville	Cuyahoga Co.
2000	180	1,777
2001	276	1,810
2002	188	1,805
2003	160	1,865
2004	116	2,010
2005	79	1,748
2006	83	1,246
2007	77	922
2008	46	542
2009	56	462
2010	54	490
2011*	64	405

Source: SOCDs Building Permits Database

*preliminary

Strongsville City School District

SURVIVAL RATIOS

The chart below demonstrates the changes in enrollment as students move through the system. Percentages greater than 100 indicate that there are more students than there were in the previous grade the previous year. In other words, there was growth and new students entered the system. Percentages less than 100 indicate that there was decline with students leaving the system.

- Birth to Kindergarten: This ratio indicates the number of children born in the area who attend kindergarten in the District 5 years later. Percentages less than 100% result from movement out of the district, attendance at a non-public or charter school, or residence in another district within the same area.
- Grades 8-9: The higher than usual percentage often is a result of school district promotion policies. Often in school districts, students are promoted from 8th to 9th grade and after one year in 9th grade do not have sufficient credits to be classified as 10th graders and are counted again as 9th graders the following year. There may also be students who attended private or charter schools or are home schooled through grade 8 and then attend public schools for high school education.

The following table illustrates the survival ratios used in developing the enrollment projections for the Strongsville City School District.

from	to	birth -> K	K->1	1->2	2->3	3->4	4->5	5->6	6->7	7->8	8->9	9->10	10->11	11->12
2002	2003	97.3%	114.4%	103.5%	106.7%	101.3%	103.1%	102.8%	101.5%	103.2%	111.4%	97.6%	88.7%	99.3%
2003	2004	105.5%	113.6%	102.2%	101.4%	101.5%	102.0%	100.0%	103.8%	100.7%	106.6%	99.3%	92.2%	100.7%
2004	2005	93.3%	113.3%	101.6%	100.0%	102.8%	100.4%	102.1%	105.4%	97.9%	112.1%	99.4%	76.1%	84.2%
2005	2006	87.9%	114.5%	99.4%	98.4%	100.4%	99.2%	102.8%	102.9%	103.6%	109.0%	96.1%	77.1%	100.0%
2006	2007	84.8%	117.1%	97.6%	101.8%	101.9%	102.7%	101.7%	104.7%	100.7%	107.3%	97.4%	78.5%	100.6%
2007	2008	71.4%	114.7%	96.9%	101.2%	99.4%	100.0%	102.1%	105.9%	100.2%	108.5%	94.0%	78.6%	96.8%
2008	2009	79.5%	124.0%	98.3%	102.9%	99.6%	99.6%	102.2%	106.2%	100.4%	107.1%	98.8%	80.5%	95.6%
2009	2010	71.3%	121.3%	98.5%	98.5%	102.0%	103.1%	102.6%	104.0%	101.6%	109.2%	97.1%	75.2%	96.3%
2010	2011	76.9%	126.3%	100.9%	100.0%	101.1%	99.8%	101.2%	102.7%	97.5%	104.1%	99.0%	74.0%	96.5%
	average	85.32%	117.689%	99.88%	101.2%	101.10%	101.1%	101.9%	104.1%	100.6%	108.362%	97.637%	80.102%	96.662%
	standard deviation	11.127%	4.638%	2.139%	2.392%	1.052%	1.499%	0.836%	1.485%	1.942%	2.319%	1.657%	5.885%	4.792%

Strongsville City School District

ENROLLMENT PROJECTION

Enrollment projections were developed after analyzing the data collected in this report. The projections indicate a decrease of 1,013 students in grades Pre-K through 12, not including regular Pre-K or full-time JVS students, from the 2011-12 to the 2021-22 school year. The following tables and graph illustrate projected enrollments by grade and by grade group through the 2021-22 school year.

Preschool:

The Ohio School Design Manual [OSDM] provides space for preschool students with disabilities and a maximum of 40 ECE preschool students. The Strongsville City School District funds preschool through the following source:

- Preschool special ed. unit funding

Kindergarten:

The OSDM provides space for all day, every day kindergarten.

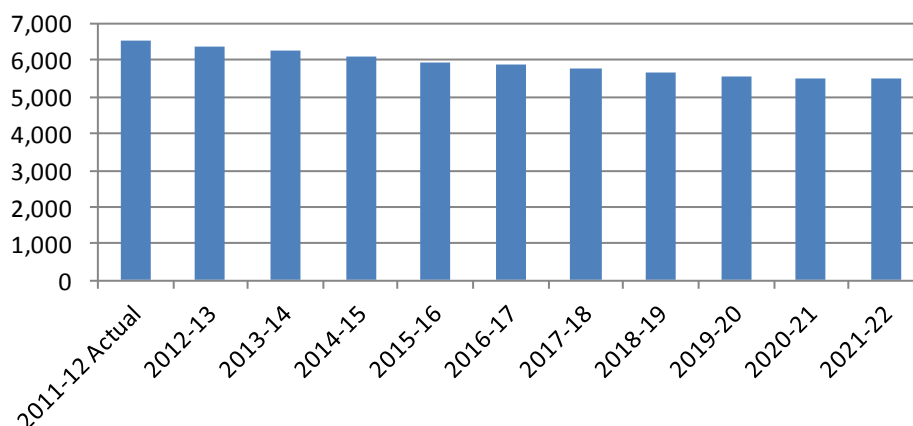
JVS:

Full-time JVS students are not included in the projected enrollment figures. These students are counted at the JVS district.

Career Technical:

Due to the specialized space requirements, career technical students are pulled out of the 11th and 12th grade enrollments and projected separately.

**Strongsville City School District
Projected Enrollment**



Strongsville City School District

Strongsville City School District Projected Enrollment

Grade	2011-12 Actual	2012-13	2013-14	2014-15	2015-16	2016-17	2017-18	2018-19	2019-20	2020-21	2021-22
Pre-K (special needs)	59	62	67	62	65	64	64	64	64	64	64
K	319	304	330	307	319	318	318	318	318	318	318
1	379	396	377	408	381	395	393	393	393	393	393
2	466	379	395	376	407	380	394	392	392	392	392
3	397	472	383	400	380	412	384	399	397	397	397
4	458	403	479	388	405	385	418	390	404	402	402
5	466	460	404	480	390	406	387	419	391	406	404
6	509	476	470	413	490	398	415	395	428	399	414
7	532	529	495	488	429	510	413	431	410	445	415
8	512	536	533	498	491	432	513	416	434	413	448
9	613	553	579	575	538	530	466	554	449	469	446
10	602	603	544	569	566	529	521	458	544	442	461
11	446	450	450	406	425	422	395	389	342	406	330
12	465	430	433	434	391	409	407	380	375	330	392
Pre-K - 12 Total	6,223	6,053	5,939	5,804	5,677	5,590	5,488	5,398	5,341	5,276	5,276
Ungraded	14	18	17	17	17	16	16	16	16	15	15
Career Tech Comprehensive - Low Bay	120	116	117	111	108	110	106	102	95	97	96
Career Tech Off-Site	174	160	161	153	148	151	146	140	130	134	131
Grand Total	6,531	6,347	6,234	6,085	5,950	5,867	5,756	5,656	5,582	5,522	5,518

Source: DeJONG-HEALY

Strongsville City School District Projected Enrollment by Grade Group

Grade	2011-12 Actual	2012-13	2013-14	2014-15	2015-16	2016-17	2017-18	2018-19	2019-20	2020-21	2021-22
Pre-K (special needs) - 5	2,544	2,476	2,435	2,421	2,347	2,360	2,358	2,375	2,359	2,372	2,370
6 - 8	1,553	1,541	1,498	1,399	1,410	1,340	1,341	1,242	1,272	1,257	1,277
9 - 12	2,126	2,036	2,006	1,984	1,920	1,890	1,789	1,781	1,710	1,647	1,629
Pre-K - 12 Total	6,223	6,053	5,939	5,804	5,677	5,590	5,488	5,398	5,341	5,276	5,276
Ungraded	14	18	17	17	17	16	16	16	16	15	15
Career Tech Comprehensive - Low Bay	120	116	117	111	108	110	106	102	95	97	96
Career Tech Off-Site	174	160	161	153	148	151	146	140	130	134	131
Grand Total	6,531	6,347	6,234	6,085	5,950	5,867	5,756	5,656	5,582	5,522	5,518

Source: DeJONG-HEALY

The enrollment year used for master planning purposes is determined by whether the enrollment is projected to increase or decrease. In districts with increasing enrollment, the 2021-22 school year is used. In districts with declining enrollment, the 2016-17 school year is used.

Strongsville City School District Master Planning Year Projected Enrollment

Grade	2016-17
Pre-K - 12 Total	5,590
Ungraded	16
Career Tech Comprehensive - Low Bay	110
Career Tech Off-Site	151
Total	5,867

Source: DeJONG-HEALY

CONCLUSION

As with any projection, the District should pay close attention to live birth counts, enrollment in elementary schools, community school enrollment, open enrollment, and any housing growth. Each of these factors will have an impact on future student enrollment.

DeJONG-HEALY is pleased to have had the opportunity to provide the District with enrollment projection services. We hope this document will provide the necessary information to make informed decisions about the future of the Strongsville City School District.

APPENDIX

The following items were used to complete the enrollment projections report:

- District Questionnaire
- Housing Information
- April 2009 Enrollment Projection Report [available upon request]
- Acceptance

OSFC Questionnaire - Strongsville City SD (44842)

**Contact Information:**

Superintendent Name:	Jefferey R. Lampert
Superintendent Email:	lampert@strongnet.org
Superintendent Phone:	(440) 572-7010
Contact Name (if different from Superintendent):	Mr. Mark Donnelly
Contact Title:	Director of Business Services
Contact Email:	donnelly@strongnet.org
Contact Phone:	(440) 572-7050

K-12 Enrollment

Your district's 10-year District-wide enrollment numbers:

Grade	Enrolled 2002-03	Enrolled 2003-04	Enrolled 2004-05	Enrolled 2005-06	Enrolled 2006-07	Enrolled 2007-08	Enrolled 2008-09	Enrolled 2009-10	Enrolled 2010-11	Enrolled 2011-12
K	444	427	445	433	392	408	325	381	300	319
1	481	508	485	504	496	459	468	403	462	379
2	495	498	519	493	501	484	445	460	397	466
3	547	528	505	519	485	510	490	458	453	397
4	556	554	536	519	521	494	507	488	467	458
5	543	573	565	538	515	535	494	505	503	466
6	583	558	573	577	553	524	546	505	518	509
7	588	592	579	604	594	579	555	580	525	532
8	552	607	596	567	626	598	580	557	589	512
9	655	615	647	668	618	672	649	621	608	613
10	603	639	611	643	642	602	632	641	603	602
11	586	565	621	598	630	611	595	628	629	571
12	511	597	594	632	582	642	616	597	622	634
Ungraded	16	16	19	25	25	0	0	19	22	14
Total:	7160	7277	7295	7320	7180	7118	6902	6843	6698	6472

All Day Kindergarten

Your District does NOT offer kindergarten to all students, all day, every day:

Preschool Enrollment

Your Preschool funding sources are:

- Preschool special ed unit funding

You do not house Early Childhood Education (ECE) students in your facility.
Pre-K students with disabilities:

Grade	Enrolled 2002-03	Enrolled 2003-04	Enrolled 2004-05	Enrolled 2005-06	Enrolled 2006-07	Enrolled 2007-08	Enrolled 2008-09	Enrolled 2009-10	Enrolled 2010-11	Enrolled 2011-12
Pre-K with disabilities	0	0	0	82	73	65	58	78	64	59
Total:	0	0	0	82	73	65	58	78	64	59

Other Pre-K enrollment:

Grade	Enrolled 2002-03	Enrolled 2003-04	Enrolled 2004-05	Enrolled 2005-06	Enrolled 2006-07	Enrolled 2007-08	Enrolled 2008-09	Enrolled 2009-10	Enrolled 2010-11	Enrolled 2011-12
Pre-K Other (not disabled, not enrolled in ECE, or Federal Head Start)	0	0	0	0	0	0	37	21	23	15
Total:	0	0	0	0	0	0	37	21	23	15

Student to Teacher Ratio

Your average student to teacher ratios are:

- K-3: 24.0
- 4-5: 25.0
- 6-8: 28.0
- 9-12: 32.0

Grade Configuration

Your district has the following grade configurations:

PK - 12
Not Selected - Not Selected

Students with Disabilities

The following is your District's students with disabilities by ODE program code and grade configuration.:

Code	Grades PK-12
IE13	358
IE14	169
IE15	33
Total:	560

Your District does not have any additional Students with Disabilities programs.

Community Enrollment

Grade	Enrolled 2002-03	Enrolled 2003-04	Enrolled 2004-05	Enrolled 2005-06	Enrolled 2006-07	Enrolled 2007-08	Enrolled 2008-09	Enrolled 2009-10	Enrolled 2010-11	Enrolled 2011-12
PK	0	0	0	0	0	0	0	0	0	0

K	0	2	3	3	1	3	2	5	2	12
1	2	2	0	0	2	2	0	2	8	2
2	0	1	4	4	3	4	1	2	2	9
3	1	1	3	3	1	5	1	2	3	6
4	1	0	1	1	2	2	5	2	1	5
5	0	1	1	1	1	1	2	5	1	5
6	0	1	1	1	1	1	1	1	7	1
7	1	0	3	3	1	4	3	1	1	8
8	1	0	0	0	0	6	3	3	5	9
9	3	0	6	6	14	19	15	13	11	18
10	0	2	5	5	8	14	13	18	15	13
11	1	1	7	7	3	10	17	14	18	22
12	0	1	4	4	8	8	9	16	15	18
Ungraded	0	0	2	2	3	2	4	1	4	8
Total:	10	12	40	40	48	81	76	85	93	136

Open Enrollment

Your District's Open Enrollment (In) numbers:

Grade	Enrolled 2004-05	Enrolled 2005-06	Enrolled 2006-07	Enrolled 2007-08	Enrolled 2008-09	Enrolled 2009-10	Enrolled 2010-11	Enrolled 2011-12
PK	0	0	0	0	0	0	0	0
K	0	0	0	1	0	0	0	0
1	0	0	0	0	1	0	0	0
2	0	0	0	0	0	1	0	0
3	0	0	0	0	0	0	0	0
4	0	0	0	0	0	0	0	0
5	0	0	0	0	0	0	0	0
6	0	0	0	0	0	0	0	0
7	0	0	0	0	0	0	0	0
8	0	0	0	0	0	0	0	0
9	0	0	0	0	0	0	0	0
10	0	0	0	0	0	0	0	0
11	0	0	0	0	0	0	0	0
12	0	0	0	0	0	0	0	0
Ungraded	0	0	0	0	0	0	0	0
Total:	0	0	0	1	1	1	0	0

Your District's Open Enrollment (Out) numbers:

Grade	Enrolled 2004-05	Enrolled 2005-06	Enrolled 2006-07	Enrolled 2007-08	Enrolled 2008-09	Enrolled 2009-10	Enrolled 2010-11	Enrolled 2011-12
PK	0	0	0	0	0	0	0	0
K	0	2	0	1	0	1	1	3
1	1	0	0	0	1	0	0	1
2	0	1	0	1	0	0	0	1
3	0	1	2	0	1	0	1	0
4	1	0	0	1	0	2	0	1
5	1	2	0	1	0	0	1	0
6	0	1	2	1	1	0	0	1
7	1	0	1	2	0	0	0	0
8	0	2	1	1	1	0	2	0
9	0	1	3	2	0	2	0	2
10	2	1	1	2	0	0	2	0
11	2	3	3	1	0	2	1	3
12	2	6	3	3	1	0	1	1
Ungraded	0	0	0	0	0	0	0	0
Total:	10	20	16	16	5	7	9	13

JVSD Enrollment

Your District participates in a JVSD with the Polaris JVSD District.

Your District's JVS (or "Other") program has the following full and half-time enrollments:

Grade	Enrolled 2002-03	Enrolled 2003-04	Enrolled 2004-05	Enrolled 2005-06	Enrolled 2006-07	Enrolled 2007-08	Enrolled 2008-09	Enrolled 2009-10	Enrolled 2010-11	Enrolled 2011-12
Full-Time 11th	0	0	0	21	18	18	9	1	1	0
Full-Time 12th	0	0	0	29	19	18	19	10	1	0
Half-Time 11th	0	0	0	68	63	65	75	101	84	94
Half-Time 12th	0	0	0	55	44	64	61	72	84	80
Total:	0	0	0	173	144	165	164	184	170	174

Career Tech. Enrollment

The following table contains your District's 10-year **Comprehensive Career Tech** enrollment for the "14.0300 - Administrative and Professional Support - 1" program:

Grade	Enrolled 2002-03	Enrolled 2003-04	Enrolled 2004-05	Enrolled 2005-06	Enrolled 2006-07	Enrolled 2007-08	Enrolled 2008-09	Enrolled 2009-10	Enrolled 2010-11	Enrolled 2011-12
Comprehensive Career Tech 11th	0	0	1	0	1	0	0	1	1	0
Comprehensive Career Tech 12th	11	30	27	30	27	30	28	32	23	35
Total:	11	30	28	30	28	30	28	33	24	35

Your district does not have students coming from outside districts to take this career tech program.

The following table contains your District's 10-year **Comprehensive Career Tech** enrollment for the "04.0810 - Marketing Management And Research - 3" program:

Grade	Enrolled 2002-03	Enrolled 2003-04	Enrolled 2004-05	Enrolled 2005-06	Enrolled 2006-07	Enrolled 2007-08	Enrolled 2008-09	Enrolled 2009-10	Enrolled 2010-11	Enrolled 2011-12
Comprehensive Career Tech 11th	42	30	31	44	52	24	38	16	61	31
Comprehensive Career Tech 12th	0	27	28	22	27	31	20	31	24	54
Total:	42	57	59	66	79	55	58	47	85	85

Your district does not have students coming from outside districts to take this career tech program.

Boundaries

Your District has experienced a boundary changed since 2004 and you described it as follows:

WE HAVE CLOSED 1 ELEMENTARY BUILDING AND REDISTRIBUTED THE STUDENT AMONGST 4 OTHER ELEMENTARY BUILDINGS.

Growth

Your District does not expect substantial growth.

Additional Information

You provided these additional comments:

Documents for Submission

You indicated that you will submit the following documents:

- Copies of any previous enrollment projections completed.

© 2011 DeJONG-HEALY.

Please contact Ann Hoffsis (osfc@dejonghealy.com, 614-526-4167) with any questions or concerns.

SOCDS Building Permits Database

Query Results

County Totals

Housing Unit Building Permits for: Cuyahoga County, OH

	2000	2001	2002	2003	2004	2005	2006	2007	2008	2009	2010
Units in Single-Family Structures	1,777	1,810	1,805	1,865	2,010	1,748	1,246	922	542	462	490

All County Jurisdictions

Housing Unit Building Permits for: BAY VILLAGE, OH (Cuyahoga County)

	2000	2001	2002	2003	2004	2005	2006	2007	2008	2009	2010
Units in Single-Family Structures	9	6	25	17	8	14	11	9	3	9	6

Housing Unit Building Permits for: BEACHWOOD, OH (Cuyahoga County)

	2000	2001	2002	2003	2004	2005	2006	2007	2008	2009	2010
Units in Single-Family Structures	2	2	2	15	7	5	6	10	8	0	0

Housing Unit Building Permits for: BEDFORD HEIGHTS, OH (Cuyahoga County)

	2000	2001	2002	2003	2004	2005	2006	2007	2008	2009	2010
Units in Single-Family Structures	0	24	14	18	5	7	9	2	14	4	8

Housing Unit Building Permits for: BEDFORD, OH (Cuyahoga County)

	2000	2001	2002	2003	2004	2005	2006	2007	2008	2009	2010
Units in Single-Family Structures	2	3	3	0	1	3	2	5	1	1	0

**Housing Unit Building Permits for:
BENTLEYVILLE VILLAGE, OH
(Cuyahoga County)**

	2000	2001	2002	2003	2004	2005	2006	2007	2008	2009	2010
Units in Single-Family Structures	5	1	2	2	1	0	2	0	2	0	2

**Housing Unit Building Permits for:
BEREA, OH
(Cuyahoga County)**

	2000	2001	2002	2003	2004	2005	2006	2007	2008	2009	2010
Units in Single-Family Structures	9	11	11	9	81	100	97	80	77	70	52

**Housing Unit Building Permits for:
BRATENAHL VILLAGE, OH
(Cuyahoga County)**

	2000	2001	2002	2003	2004	2005	2006	2007	2008	2009	2010
Units in Single-Family Structures	9	11	6	8	4	4	2	1	1	0	1

**Housing Unit Building Permits for:
BRECKSVILLE, OH
(Cuyahoga County)**

	2000	2001	2002	2003	2004	2005	2006	2007	2008	2009	2010
Units in Single-Family Structures	68	65	37	46	29	40	23	12	12	9	4

**Housing Unit Building Permits for:
BROADVIEW HEIGHTS, OH
(Cuyahoga County)**

	2000	2001	2002	2003	2004	2005	2006	2007	2008	2009	2010
Units in Single-Family Structures	116	104	258	272	342	177	50	30	18	12	23

**Housing Unit Building Permits for:
BROOK PARK, OH
(Cuyahoga County)**

	2000	2001	2002	2003	2004	2005	2006	2007	2008	2009	2010
Units in Single-Family Structures	5	2	1	3	33	8	4	8	6	6	3

**Housing Unit Building Permits for:
BROOKLYN HEIGHTS VILLAGE, OH
(Cuyahoga County)**

	2000	2001	2002	2003	2004	2005	2006	2007	2008	2009	2010
Units in Single-Family Structures	3	3	8	2	3	1	1	3	1	1	0

**Housing Unit Building Permits for:
BROOKLYN, OH
(Cuyahoga County)**

	2000	2001	2002	2003	2004	2005	2006	2007	2008	2009	2010
Units in Single-Family Structures	0	0	2	3	4	0	0	0	0	0	0

**Housing Unit Building Permits for:
CHAGRIN FALLS TOWNSHIP, OH
(Cuyahoga County)**

	2000	2001	2002	2003	2004	2005	2006	2007	2008	2009	2010
Units in Single-Family Structures	0	0	0	0	0	0	0	0	1	0	1

**Housing Unit Building Permits for:
CHAGRIN FALLS VILLAGE, OH
(Cuyahoga County)**

	2000	2001	2002	2003	2004	2005	2006	2007	2008	2009	2010
Units in Single-Family Structures	1	8	3	0	3	2	0	3	3	4	3

**Housing Unit Building Permits for:
CLEVELAND HEIGHTS, OH
(Cuyahoga County)**

	2000	2001	2002	2003	2004	2005	2006	2007	2008	2009	2010
Units in Single-Family Structures	31	13	30	5	34	6	14	7	0	0	1

**Housing Unit Building Permits for:
CLEVELAND, OH
(Cuyahoga County)**

	2000	2001	2002	2003	2004	2005	2006	2007	2008	2009	2010
Units in Single-Family Structures	314	328	345	372	374	345	253	184	109	87	91

**Housing Unit Building Permits for:
CUYAHOGA COUNTY PART, OH
(Cuyahoga County)**

	2000	2001	2002	2003	2004	2005	2006	2007	2008	2009	2010
Units in Single-Family Structures	0	0	0	0	0	0	0	0	0	0	0

**Housing Unit Building Permits for:
CUYAHOGA COUNTY UNINCORPORATED AREA, OH
(Cuyahoga County)**

	2000	2001	2002	2003	2004	2005	2006	2007	2008	2009	2010
Units in Single-Family Structures	0	0	0	0	0	0	0	0	0	0	0

**Housing Unit Building Permits for:
CUYAHOGA HEIGHTS VILLAGE, OH
(Cuyahoga County)**

	2000	2001	2002	2003	2004	2005	2006	2007	2008	2009	2010
Units in Single-Family Structures	0	0	0	0	0	0	1	1	1	1	0

**Housing Unit Building Permits for:
EAST CLEVELAND, OH
(Cuyahoga County)**

	2000	2001	2002	2003	2004	2005	2006	2007	2008	2009	2010
Units in Single-Family Structures	0	0	0	0	0	2	6	5	0	0	0

**Housing Unit Building Permits for:
EUCLID, OH
(Cuyahoga County)**

	2000	2001	2002	2003	2004	2005	2006	2007	2008	2009	2010
Units in Single-Family Structures	16	10	12	9	10	9	5	12	2	0	0

**Housing Unit Building Permits for:
FAIRVIEW PARK, OH
(Cuyahoga County)**

	2000	2001	2002	2003	2004	2005	2006	2007	2008	2009	2010
Units in Single-Family Structures	2	1	2	3	1	2	0	3	2	1	3

**Housing Unit Building Permits for:
GARFIELD HEIGHTS, OH
(Cuyahoga County)**

	2000	2001	2002	2003	2004	2005	2006	2007	2008	2009	2010
Units in Single-Family Structures	9	21	22	14	31	18	9	1	0	0	0

**Housing Unit Building Permits for:
GATES MILLS VILLAGE, OH
(Cuyahoga County)**

	2000	2001	2002	2003	2004	2005	2006	2007	2008	2009	2010
Units in Single-Family Structures	3	1	3	4	2	2	3	1	1	1	0

**Housing Unit Building Permits for:
GLENWILLOW VILLAGE, OH
(Cuyahoga County)**

	2000	2001	2002	2003	2004	2005	2006	2007	2008	2009	2010
Units in Single-Family Structures	4	5	14	24	25	20	16	10	3	4	3

**Housing Unit Building Permits for:
HIGHLAND HEIGHTS, OH
(Cuyahoga County)**

	2000	2001	2002	2003	2004	2005	2006	2007	2008	2009	2010
Units in Single-Family Structures	62	51	45	61	56	41	25	12	7	10	7

**Housing Unit Building Permits for:
HIGHLAND HILLS VILLAGE, OH
(Cuyahoga County)**

	2000	2001	2002	2003	2004	2005	2006	2007	2008	2009	2010
Units in Single-Family Structures	0	0	0	0	0	0	0	0	0	0	0

**Housing Unit Building Permits for:
HUNTING VALLEY VILLAGE, OH
(Cuyahoga County)**

	2000	2001	2002	2003	2004	2005	2006	2007	2008	2009	2010
Units in Single-Family Structures	2	0	0	0	5	2	7	1	2	0	4

**Housing Unit Building Permits for:
INDEPENDENCE, OH
(Cuyahoga County)**

	2000	2001	2002	2003	2004	2005	2006	2007	2008	2009	2010
Units in Single-Family Structures	23	34	16	22	18	21	18	11	3	16	25

**Housing Unit Building Permits for:
LAKEWOOD, OH
(Cuyahoga County)**

	2000	2001	2002	2003	2004	2005	2006	2007	2008	2009	2010
Units in Single-Family Structures	0	0	0	0	1	1	4	9	6	1	0

**Housing Unit Building Permits for:
LINNDALE VILLAGE, OH
(Cuyahoga County)**

	2000	2001	2002	2003	2004	2005	2006	2007	2008	2009	2010
Units in Single-Family Structures	0	0	0	0	0	0	0	0	0	0	0

**Housing Unit Building Permits for:
LYNDHURST, OH
(Cuyahoga County)**

	2000	2001	2002	2003	2004	2005	2006	2007	2008	2009	2010
Units in Single-Family Structures	0	2	3	6	19	10	15	7	1	0	0

**Housing Unit Building Permits for:
MAPLE HEIGHTS, OH
(Cuyahoga County)**

	2000	2001	2002	2003	2004	2005	2006	2007	2008	2009	2010
Units in Single-Family Structures	11	13	13	14	14	14	10	8	5	3	4

**Housing Unit Building Permits for:
MAYFIELD HEIGHTS, OH
(Cuyahoga County)**

	2000	2001	2002	2003	2004	2005	2006	2007	2008	2009	2010
Units in Single-Family Structures	3	8	21	9	44	44	43	27	12	5	19

**Housing Unit Building Permits for:
MAYFIELD VILLAGE, OH
(Cuyahoga County)**

	2000	2001	2002	2003	2004	2005	2006	2007	2008	2009	2010
Units in Single-Family Structures	1	2	1	2	1	5	4	4	2	0	0

**Housing Unit Building Permits for:
MIDDLEBURG HEIGHTS, OH
(Cuyahoga County)**

	2000	2001	2002	2003	2004	2005	2006	2007	2008	2009	2010
Units in Single-Family Structures	89	77	77	70	70	40	28	16	4	3	8

**Housing Unit Building Permits for:
MORELAND HILLS VILLAGE, OH
(Cuyahoga County)**

	2000	2001	2002	2003	2004	2005	2006	2007	2008	2009	2010
Units in Single-Family Structures	8	9	7	9	7	8	8	5	4	3	5

**Housing Unit Building Permits for:
NEWBURGH HEIGHTS VILLAGE, OH
(Cuyahoga County)**

	2000	2001	2002	2003	2004	2005	2006	2007	2008	2009	2010
Units in Single-Family Structures	0	0	0	0	0	0	0	0	0	0	0

**Housing Unit Building Permits for:
NORTH OLMSTED, OH
(Cuyahoga County)**

	2000	2001	2002	2003	2004	2005	2006	2007	2008	2009	2010
Units in Single-Family Structures	47	18	24	29	23	36	9	9	0	0	2

**Housing Unit Building Permits for:
NORTH RANDALL VILLAGE, OH
(Cuyahoga County)**

	2000	2001	2002	2003	2004	2005	2006	2007	2008	2009	2010
Units in Single-Family Structures	0	0	0	0	0	0	0	0	0	0	0

**Housing Unit Building Permits for:
NORTH ROYALTON, OH
(Cuyahoga County)**

	2000	2001	2002	2003	2004	2005	2006	2007	2008	2009	2010
Units in Single-Family Structures	185	194	167	189	187	174	128	91	54	41	44

**Housing Unit Building Permits for:
OAKWOOD VILLAGE, OH
(Cuyahoga County)**

	2000	2001	2002	2003	2004	2005	2006	2007	2008	2009	2010
Units in Single-Family Structures	5	13	11	23	17	35	49	40	9	13	20

**Housing Unit Building Permits for:
OLMSTED FALLS, OH
(Cuyahoga County)**

	2000	2001	2002	2003	2004	2005	2006	2007	2008	2009	2010
Units in Single-Family Structures	100	65	51	45	14	23	14	10	2	3	0

**Housing Unit Building Permits for:
ORANGE VILLAGE, OH
(Cuyahoga County)**

	2000	2001	2002	2003	2004	2005	2006	2007	2008	2009	2010
Units in Single-Family Structures	38	11	7	13	10	10	9	3	4	2	3

**Housing Unit Building Permits for:
PARMA HEIGHTS, OH
(Cuyahoga County)**

	2000	2001	2002	2003	2004	2005	2006	2007	2008	2009	2010
Units in Single-Family Structures	9	4	7	4	9	12	2	0	0	5	0

**Housing Unit Building Permits for:
PARMA, OH
(Cuyahoga County)**

	2000	2001	2002	2003	2004	2005	2006	2007	2008	2009	2010
Units in Single-Family Structures	20	42	42	37	34	31	40	20	8	8	5

**Housing Unit Building Permits for:
PEPPER PIKE, OH
(Cuyahoga County)**

	2000	2001	2002	2003	2004	2005	2006	2007	2008	2009	2010
Units in Single-Family Structures	5	6	1	8	6	20	29	15	11	6	9

**Housing Unit Building Permits for:
RICHMOND HEIGHTS, OH
(Cuyahoga County)**

	2000	2001	2002	2003	2004	2005	2006	2007	2008	2009	2010
Units in Single-Family Structures	36	24	26	22	29	23	13	26	30	22	26

**Housing Unit Building Permits for:
ROCKY RIVER, OH
(Cuyahoga County)**

	2000	2001	2002	2003	2004	2005	2006	2007	2008	2009	2010
Units in Single-Family Structures	7	16	16	18	27	38	29	2	1	17	14

**Housing Unit Building Permits for:
SEVEN HILLS, OH
(Cuyahoga County)**

	2000	2001	2002	2003	2004	2005	2006	2007	2008	2009	2010
Units in Single-Family Structures	43	43	45	50	50	44	33	22	13	8	10

**Housing Unit Building Permits for:
SHAKER HEIGHTS, OH
(Cuyahoga County)**

	2000	2001	2002	2003	2004	2005	2006	2007	2008	2009	2010
Units in Single-Family Structures	1	17	13	13	13	34	0	2	0	0	0

**Housing Unit Building Permits for:
SOLON, OH
(Cuyahoga County)**

	2000	2001	2002	2003	2004	2005	2006	2007	2008	2009	2010
Units in Single-Family Structures	103	123	93	116	137	127	49	23	17	8	10

**Housing Unit Building Permits for:
SOUTH EUCLID, OH
(Cuyahoga County)**

	2000	2001	2002	2003	2004	2005	2006	2007	2008	2009	2010
Units in Single-Family Structures	0	0	4	26	6	6	7	9	12	4	6

**Housing Unit Building Permits for:
STRONGSVILLE, OH
(Cuyahoga County)**

	2000	2001	2002	2003	2004	2005	2006	2007	2008	2009	2010
Units in Single-Family Structures	180	276	188	160	116	79	83	77	46	56	54

**Housing Unit Building Permits for:
UNIVERSITY HEIGHTS, OH
(Cuyahoga County)**

	2000	2001	2002	2003	2004	2005	2006	2007	2008	2009	2010
Units in Single-Family Structures	1	1	0	1	0	0	0	0	1	1	0

**Housing Unit Building Permits for:
VALLEY VIEW VILLAGE, OH
(Cuyahoga County)**

	2000	2001	2002	2003	2004	2005	2006	2007	2008	2009	2010
Units in Single-Family Structures	5	6	4	0	2	2	1	0	0	1	1

**Housing Unit Building Permits for:
WALTON HILLS VILLAGE, OH
(Cuyahoga County)**

	2000	2001	2002	2003	2004	2005	2006	2007	2008	2009	2010
Units in Single-Family Structures	7	8	6	7	5	7	5	3	2	1	0

**Housing Unit Building Permits for:
WARRENSVILLE HEIGHTS, OH
(Cuyahoga County)**

	2000	2001	2002	2003	2004	2005	2006	2007	2008	2009	2010
Units in Single-Family Structures	0	0	0	0	0	5	0	9	5	5	0

**Housing Unit Building Permits for:
WARRENSVILLE TOWNSHIP, OH
(Cuyahoga County)**

	2000	2001	2002	2003	2004	2005	2006	2007	2008	2009	2010
Units in Single-Family Structures	0	0	0	0	0	0	0	0	0	0	0

**Housing Unit Building Permits for:
WESTLAKE, OH
(Cuyahoga County)**

	2000	2001	2002	2003	2004	2005	2006	2007	2008	2009	2010
Units in Single-Family Structures	175	128	117	85	92	90	67	72	15	9	13

**Housing Unit Building Permits for:
WOODMERE VILLAGE, OH
(Cuyahoga County)**

	2000	2001	2002	2003	2004	2005	2006	2007	2008	2009	2010
Units in Single-Family Structures	3	0	0	0	0	1	3	2	1	1	0

[Click for Comma-Delimited Output](#)

[Click to Download* Output in EXCEL](#)

* : Save the output as an Excel workbook *.xls file.

SOCDS Building Permits Database

Query Results

County Totals

Housing Unit Building Permits for: Cuyahoga County, OH (Preliminary Data)

	Jan. 2011	Feb. 2011	Mar. 2011	Apr. 2011	May 2011	June 2011	July 2011	Aug. 2011	Sep. 2011	Oct. 2011	Nov. 2011	Dec. 2011	Total 2011
Units in Single-Family Structures	21	20	32	39	43	55	30	32	41	45	29	18	405

All County Jurisdictions

Housing Unit Building Permits for: BAY VILLAGE, OH Cuyahoga County (Preliminary Data)

	Jan. 2011	Feb. 2011	Mar. 2011	Apr. 2011	May 2011	June 2011	July 2011	Aug. 2011	Sep. 2011	Oct. 2011	Nov. 2011	Dec. 2011	Total 2011
Units in Single-Family Structures	0	0	0	2	0	0	0	0	0	0	3	1	6

Housing Unit Building Permits for: BEACHWOOD, OH Cuyahoga County (Preliminary Data)

	Jan. 2011	Feb. 2011	Mar. 2011	Apr. 2011	May 2011	June 2011	July 2011	Aug. 2011	Sep. 2011	Oct. 2011	Nov. 2011	Dec. 2011	Total 2011
Units in Single-Family Structures	0	0	0	1	2	0	1	0	0	0	1	0	5

Housing Unit Building Permits for: BEDFORD HEIGHTS, OH Cuyahoga County (Preliminary Data)													
	Jan. 2011	Feb. 2011	Mar. 2011	Apr. 2011	May 2011	June 2011	July 2011	Aug. 2011	Sep. 2011	Oct. 2011	Nov. 2011	Dec. 2011	Total 2011
Units in Single-Family Structures	0	0	0	0	1	2	0	0	0	0	0	0	3

Housing Unit Building Permits for: BEDFORD, OH Cuyahoga County (Preliminary Data)													
	Jan. 2011	Feb. 2011	Mar. 2011	Apr. 2011	May 2011	June 2011	July 2011	Aug. 2011	Sep. 2011	Oct. 2011	Nov. 2011	Dec. 2011	Total 2011
Units in Single-Family Structures	0	0	0	0	0	0	0	0	0	0	0	0	0

Housing Unit Building Permits for: BENTLEYVILLE VILLAGE, OH Cuyahoga County (Preliminary Data)													
	Jan. 2011	Feb. 2011	Mar. 2011	Apr. 2011	May 2011	June 2011	July 2011	Aug. 2011	Sep. 2011	Oct. 2011	Nov. 2011	Dec. 2011	Total 2011
Units in Single-Family Structures	0	0	0	0	0	0	0	0	0	0	0	0	0

Housing Unit Building Permits for: BEREA, OH Cuyahoga County (Preliminary Data)													
	Jan. 2011	Feb. 2011	Mar. 2011	Apr. 2011	May 2011	June 2011	July 2011	Aug. 2011	Sep. 2011	Oct. 2011	Nov. 2011	Dec. 2011	Total 2011
Units in Single-Family Structures	0	2	2	2	4	7	2	1	4	3	0	1	28

Housing Unit Building Permits for: BRATENAHL VILLAGE, OH Cuyahoga County (Preliminary Data)													
--	--	--	--	--	--	--	--	--	--	--	--	--	--

	Jan. 2011	Feb. 2011	Mar. 2011	Apr. 2011	May 2011	June 2011	July 2011	Aug. 2011	Sep. 2011	Oct. 2011	Nov. 2011	Dec. 2011	Total 2011
Units in Single-Family Structures	0	0	0	0	0	0	0	0	0	0	0	0	0

**Housing Unit Building Permits for:
BRECKSVILLE, OH
Cuyahoga County
(Preliminary Data)**

	Jan. 2011	Feb. 2011	Mar. 2011	Apr. 2011	May 2011	June 2011	July 2011	Aug. 2011	Sep. 2011	Oct. 2011	Nov. 2011	Dec. 2011	Total 2011
Units in Single-Family Structures	0	0	0	0	0	1	1	0	1	0	1	0	4

**Housing Unit Building Permits for:
BROADVIEW HEIGHTS, OH
Cuyahoga County
(Preliminary Data)**

	Jan. 2011	Feb. 2011	Mar. 2011	Apr. 2011	May 2011	June 2011	July 2011	Aug. 2011	Sep. 2011	Oct. 2011	Nov. 2011	Dec. 2011	Total 2011
Units in Single-Family Structures	2	1	4	3	1	2	3	2	1	1	1	0	21

**Housing Unit Building Permits for:
BROOK PARK, OH
Cuyahoga County
(Preliminary Data)**

	Jan. 2011	Feb. 2011	Mar. 2011	Apr. 2011	May 2011	June 2011	July 2011	Aug. 2011	Sep. 2011	Oct. 2011	Nov. 2011	Dec. 2011	Total 2011
Units in Single-Family Structures	1 _i	1 _i	1 _i	0	1 _i	0	0	0	0	0	0	0	4

Note: i = Imputed Value

**Housing Unit Building Permits for:
BROOKLYN HEIGHTS VILLAGE, OH
Cuyahoga County
(Preliminary Data)**

	Jan. 2011	Feb. 2011	Mar. 2011	Apr. 2011	May 2011	June 2011	July 2011	Aug. 2011	Sep. 2011	Oct. 2011	Nov. 2011	Dec. 2011	Total 2011
Units in Single-Family Structures	0	0	0	0	0	0	0	0	0	0	0	0	0

Housing Unit Building Permits for: BROOKLYN, OH Cuyahoga County (Preliminary Data)													
	Jan. 2011	Feb. 2011	Mar. 2011	Apr. 2011	May 2011	June 2011	July 2011	Aug. 2011	Sep. 2011	Oct. 2011	Nov. 2011	Dec. 2011	Total 2011
Units in Single-Family Structures	0	0	0	0	0	0	0	0	0	0	0	0	0

Housing Unit Building Permits for: CHAGRIN FALLS TOWNSHIP, OH Cuyahoga County (Preliminary Data)													
	Jan. 2011	Feb. 2011	Mar. 2011	Apr. 2011	May 2011	June 2011	July 2011	Aug. 2011	Sep. 2011	Oct. 2011	Nov. 2011	Dec. 2011	Total 2011
Units in Single-Family Structures	0	0	0	0	0	0	0	0	0	0	0	0	0

Housing Unit Building Permits for: CHAGRIN FALLS VILLAGE, OH Cuyahoga County (Preliminary Data)													
	Jan. 2011	Feb. 2011	Mar. 2011	Apr. 2011	May 2011	June 2011	July 2011	Aug. 2011	Sep. 2011	Oct. 2011	Nov. 2011	Dec. 2011	Total 2011
Units in Single-Family Structures	0	0	0	0	4	0	0	0	0	0	0	0	4

Housing Unit Building Permits for: CLEVELAND HEIGHTS, OH Cuyahoga County (Preliminary Data)													
	Jan. 2011	Feb. 2011	Mar. 2011	Apr. 2011	May 2011	June 2011	July 2011	Aug. 2011	Sep. 2011	Oct. 2011	Nov. 2011	Dec. 2011	Total 2011
Units in Single-Family Structures	0	0	0	0	0	2	3	1	0	0	0	0	6

Housing Unit Building Permits for: CLEVELAND, OH Cuyahoga County (Preliminary Data)													
--	--	--	--	--	--	--	--	--	--	--	--	--	--

	Jan. 2011	Feb. 2011	Mar. 2011	Apr. 2011	May 2011	June 2011	July 2011	Aug. 2011	Sep. 2011	Oct. 2011	Nov. 2011	Dec. 2011	Total 2011
Units in Single-Family Structures	4 _i	4 _i	7 _i	8 _i	8 _i	9 _i	8 _i	9 _i	8 _i	8 _i	7 _i	5 _i	85
Note: i = Imputed Value													

Housing Unit Building Permits for: CUYAHOGA COUNTY PART, OH Cuyahoga County (Preliminary Data)													
	Jan. 2011	Feb. 2011	Mar. 2011	Apr. 2011	May 2011	June 2011	July 2011	Aug. 2011	Sep. 2011	Oct. 2011	Nov. 2011	Dec. 2011	Total 2011
Units in Single-Family Structures	0	0	0	0	0	0	0	0	0	0	0	0	0

Housing Unit Building Permits for: CUYAHOGA COUNTY UNINCORPORATED AREA, OH Cuyahoga County (Preliminary Data)													
	Jan. 2011	Feb. 2011	Mar. 2011	Apr. 2011	May 2011	June 2011	July 2011	Aug. 2011	Sep. 2011	Oct. 2011	Nov. 2011	Dec. 2011	Total 2011
Units in Single-Family Structures	0	0	0	0	0	0	0	0	0	0	0	0	0

Housing Unit Building Permits for: CUYAHOGA HEIGHTS VILLAGE, OH Cuyahoga County (Preliminary Data)													
	Jan. 2011	Feb. 2011	Mar. 2011	Apr. 2011	May 2011	June 2011	July 2011	Aug. 2011	Sep. 2011	Oct. 2011	Nov. 2011	Dec. 2011	Total 2011
Units in Single-Family Structures	0	0	0	0	0	0	0	0	0	0	0	0	0

Housing Unit Building Permits for: EAST CLEVELAND, OH Cuyahoga County (Preliminary Data)													
	Jan. 2011	Feb. 2011	Mar. 2011	Apr. 2011	May 2011	June 2011	July 2011	Aug. 2011	Sep. 2011	Oct. 2011	Nov. 2011	Dec. 2011	Total 2011
Units in Single-Family Structures	0	0	0	0	0	0	0	0	0	0	0	0	0

Housing Unit Building Permits for: EUCLID, OH Cuyahoga County (Preliminary Data)													
	Jan. 2011	Feb. 2011	Mar. 2011	Apr. 2011	May 2011	June 2011	July 2011	Aug. 2011	Sep. 2011	Oct. 2011	Nov. 2011	Dec. 2011	Total 2011
Units in Single-Family Structures	0	0	0	0	0	0	0	0	0	0	0	0	0

Housing Unit Building Permits for: FAIRVIEW PARK, OH Cuyahoga County (Preliminary Data)													
	Jan. 2011	Feb. 2011	Mar. 2011	Apr. 2011	May 2011	June 2011	July 2011	Aug. 2011	Sep. 2011	Oct. 2011	Nov. 2011	Dec. 2011	Total 2011
Units in Single-Family Structures	0	0	0	0	0	0	0	0	0	0	0	0	0

Housing Unit Building Permits for: GARFIELD HEIGHTS, OH Cuyahoga County (Preliminary Data)													
	Jan. 2011	Feb. 2011	Mar. 2011	Apr. 2011	May 2011	June 2011	July 2011	Aug. 2011	Sep. 2011	Oct. 2011	Nov. 2011	Dec. 2011	Total 2011
Units in Single-Family Structures	0	0	0	0	0	0	0	0	0	0	0	0	0

Housing Unit Building Permits for: GATES MILLS VILLAGE, OH Cuyahoga County (Preliminary Data)													
	Jan. 2011	Feb. 2011	Mar. 2011	Apr. 2011	May 2011	June 2011	July 2011	Aug. 2011	Sep. 2011	Oct. 2011	Nov. 2011	Dec. 2011	Total 2011
Units in Single-Family Structures	0	0	0	0	1	2	0	0	1	1	0	1	6

Housing Unit Building Permits for: GLENWILLOW VILLAGE, OH Cuyahoga County (Preliminary Data)													
---	--	--	--	--	--	--	--	--	--	--	--	--	--

	Jan. 2011	Feb. 2011	Mar. 2011	Apr. 2011	May 2011	June 2011	July 2011	Aug. 2011	Sep. 2011	Oct. 2011	Nov. 2011	Dec. 2011	Total 2011
Units in Single-Family Structures	0	0	0	0	0	0	0	0	0	0	0	0	0

**Housing Unit Building Permits for:
HIGHLAND HEIGHTS, OH
Cuyahoga County
(Preliminary Data)**

	Jan. 2011	Feb. 2011	Mar. 2011	Apr. 2011	May 2011	June 2011	July 2011	Aug. 2011	Sep. 2011	Oct. 2011	Nov. 2011	Dec. 2011	Total 2011
Units in Single-Family Structures	2	0	0	0	1	1	2	0	0	1	0	0	7

**Housing Unit Building Permits for:
HIGHLAND HILLS VILLAGE, OH
Cuyahoga County
(Preliminary Data)**

	Jan. 2011	Feb. 2011	Mar. 2011	Apr. 2011	May 2011	June 2011	July 2011	Aug. 2011	Sep. 2011	Oct. 2011	Nov. 2011	Dec. 2011	Total 2011
Units in Single-Family Structures	0	0	0	0	0	0	0	0	0	0	0	0	0

**Housing Unit Building Permits for:
HUNTING VALLEY VILLAGE, OH
Cuyahoga County
(Preliminary Data)**

	Jan. 2011	Feb. 2011	Mar. 2011	Apr. 2011	May 2011	June 2011	July 2011	Aug. 2011	Sep. 2011	Oct. 2011	Nov. 2011	Dec. 2011	Total 2011
Units in Single-Family Structures	0	0	0	0	0	0	1	0	0	0	0	0	1

**Housing Unit Building Permits for:
INDEPENDENCE, OH
Cuyahoga County
(Preliminary Data)**

	Jan. 2011	Feb. 2011	Mar. 2011	Apr. 2011	May 2011	June 2011	July 2011	Aug. 2011	Sep. 2011	Oct. 2011	Nov. 2011	Dec. 2011	Total 2011
Units in Single-Family Structures	0	0	2	2	0	4	0	1	0	2	0	1	12

Housing Unit Building Permits for: LAKEWOOD, OH Cuyahoga County (Preliminary Data)													
	Jan. 2011	Feb. 2011	Mar. 2011	Apr. 2011	May 2011	June 2011	July 2011	Aug. 2011	Sep. 2011	Oct. 2011	Nov. 2011	Dec. 2011	Total 2011
Units in Single-Family Structures	0	0	0	0	0	0	0	0	0	0	0	0	0

Housing Unit Building Permits for: LINNDALE VILLAGE, OH Cuyahoga County (Preliminary Data)													
	Jan. 2011	Feb. 2011	Mar. 2011	Apr. 2011	May 2011	June 2011	July 2011	Aug. 2011	Sep. 2011	Oct. 2011	Nov. 2011	Dec. 2011	Total 2011
Units in Single-Family Structures	0	0	0	0	0	0	0	0	0	0	0	0	0

Housing Unit Building Permits for: LYNDHURST, OH Cuyahoga County (Preliminary Data)													
	Jan. 2011	Feb. 2011	Mar. 2011	Apr. 2011	May 2011	June 2011	July 2011	Aug. 2011	Sep. 2011	Oct. 2011	Nov. 2011	Dec. 2011	Total 2011
Units in Single-Family Structures	0	0	0	0	0	0	0	0	0	0	0	0	0

Housing Unit Building Permits for: MAPLE HEIGHTS, OH Cuyahoga County (Preliminary Data)													
	Jan. 2011	Feb. 2011	Mar. 2011	Apr. 2011	May 2011	June 2011	July 2011	Aug. 2011	Sep. 2011	Oct. 2011	Nov. 2011	Dec. 2011	Total 2011
Units in Single-Family Structures	1 _i	0	0	1 _i	1 _i	0	0	0	0	0	1 _i	0	4
Note: i = Imputed Value													

Housing Unit Building Permits for: MAYFIELD HEIGHTS, OH Cuyahoga County (Preliminary Data)													
---	--	--	--	--	--	--	--	--	--	--	--	--	--

	Jan. 2011	Feb. 2011	Mar. 2011	Apr. 2011	May 2011	June 2011	July 2011	Aug. 2011	Sep. 2011	Oct. 2011	Nov. 2011	Dec. 2011	Total 2011
Units in Single-Family Structures	0	1	1	5	0	0	0	0	0	0	0	0	7

**Housing Unit Building Permits for:
MAYFIELD VILLAGE, OH
Cuyahoga County
(Preliminary Data)**

	Jan. 2011	Feb. 2011	Mar. 2011	Apr. 2011	May 2011	June 2011	July 2011	Aug. 2011	Sep. 2011	Oct. 2011	Nov. 2011	Dec. 2011	Total 2011
Units in Single-Family Structures	0	0	0	0	0	2	0	0	0	0	0	0	2

**Housing Unit Building Permits for:
MIDDLEBURG HEIGHTS, OH
Cuyahoga County
(Preliminary Data)**

	Jan. 2011	Feb. 2011	Mar. 2011	Apr. 2011	May 2011	June 2011	July 2011	Aug. 2011	Sep. 2011	Oct. 2011	Nov. 2011	Dec. 2011	Total 2011
Units in Single-Family Structures	1	0	0	0	3	2	1	0	0	0	1	0	8

**Housing Unit Building Permits for:
MORELAND HILLS VILLAGE, OH
Cuyahoga County
(Preliminary Data)**

	Jan. 2011	Feb. 2011	Mar. 2011	Apr. 2011	May 2011	June 2011	July 2011	Aug. 2011	Sep. 2011	Oct. 2011	Nov. 2011	Dec. 2011	Total 2011
Units in Single-Family Structures	0	0	1 _i	1 _i	1 _i	0	0	1 _i	0	1 _i	0	0	5

Note: i = Imputed Value

**Housing Unit Building Permits for:
NEWBURGH HEIGHTS VILLAGE, OH
Cuyahoga County
(Preliminary Data)**

	Jan. 2011	Feb. 2011	Mar. 2011	Apr. 2011	May 2011	June 2011	July 2011	Aug. 2011	Sep. 2011	Oct. 2011	Nov. 2011	Dec. 2011	Total 2011
Units in Single-Family Structures	0	0	0	0	0	0	0	0	0	0	0	0	0

Housing Unit Building Permits for: NORTH OLMSTED, OH Cuyahoga County (Preliminary Data)													
	Jan. 2011	Feb. 2011	Mar. 2011	Apr. 2011	May 2011	June 2011	July 2011	Aug. 2011	Sep. 2011	Oct. 2011	Nov. 2011	Dec. 2011	Total 2011
Units in Single-Family Structures	0	0	2	0	0	0	0	0	0	0	0	0	2

Housing Unit Building Permits for: NORTH RANDALL VILLAGE, OH Cuyahoga County (Preliminary Data)													
	Jan. 2011	Feb. 2011	Mar. 2011	Apr. 2011	May 2011	June 2011	July 2011	Aug. 2011	Sep. 2011	Oct. 2011	Nov. 2011	Dec. 2011	Total 2011
Units in Single-Family Structures	0	0	0	0	0	0	0	0	0	0	0	0	0

Housing Unit Building Permits for: NORTH ROYALTON, OH Cuyahoga County (Preliminary Data)													
	Jan. 2011	Feb. 2011	Mar. 2011	Apr. 2011	May 2011	June 2011	July 2011	Aug. 2011	Sep. 2011	Oct. 2011	Nov. 2011	Dec. 2011	Total 2011
Units in Single-Family Structures	2 _i	2 _i	4 _i	3 _i	3 _i	4 _i	3 _i	4 _i	3 _i	3 _i	3 _i	3 _i	37
Note: i = Imputed Value													

Housing Unit Building Permits for: OAKWOOD VILLAGE, OH Cuyahoga County (Preliminary Data)													
	Jan. 2011	Feb. 2011	Mar. 2011	Apr. 2011	May 2011	June 2011	July 2011	Aug. 2011	Sep. 2011	Oct. 2011	Nov. 2011	Dec. 2011	Total 2011
Units in Single-Family Structures	1	0	0	0	1	1	0	0	1	2	3	0	9

Housing Unit Building Permits for: OLMSTED FALLS, OH Cuyahoga County													
---	--	--	--	--	--	--	--	--	--	--	--	--	--

(Preliminary Data)													
	Jan. 2011	Feb. 2011	Mar. 2011	Apr. 2011	May 2011	June 2011	July 2011	Aug. 2011	Sep. 2011	Oct. 2011	Nov. 2011	Dec. 2011	Total 2011
Units in Single-Family Structures	2	0	0	0	0	0	0	0	0	1	0	0	3

Housing Unit Building Permits for: ORANGE VILLAGE, OH Cuyahoga County (Preliminary Data)													
	Jan. 2011	Feb. 2011	Mar. 2011	Apr. 2011	May 2011	June 2011	July 2011	Aug. 2011	Sep. 2011	Oct. 2011	Nov. 2011	Dec. 2011	Total 2011
Units in Single-Family Structures	0	0	0	0	0	0	0	0	0	1	0	0	1

Housing Unit Building Permits for: PARMA HEIGHTS, OH Cuyahoga County (Preliminary Data)													
	Jan. 2011	Feb. 2011	Mar. 2011	Apr. 2011	May 2011	June 2011	July 2011	Aug. 2011	Sep. 2011	Oct. 2011	Nov. 2011	Dec. 2011	Total 2011
Units in Single-Family Structures	0	0	0	0	0	0	0	0	0	0	0	0	0

Housing Unit Building Permits for: PARMA, OH Cuyahoga County (Preliminary Data)													
	Jan. 2011	Feb. 2011	Mar. 2011	Apr. 2011	May 2011	June 2011	July 2011	Aug. 2011	Sep. 2011	Oct. 2011	Nov. 2011	Dec. 2011	Total 2011
Units in Single-Family Structures	0	0	0	0	1	1	0	0	0	1	0	0	3

Housing Unit Building Permits for: PEPPER PIKE, OH Cuyahoga County (Preliminary Data)													
	Jan. 2011	Feb. 2011	Mar. 2011	Apr. 2011	May 2011	June 2011	July 2011	Aug. 2011	Sep. 2011	Oct. 2011	Nov. 2011	Dec. 2011	Total 2011
Units in Single-Family Structures	0	2	1	1	1	0	0	2	2	1	0	0	10

**Housing Unit Building Permits for:
RICHMOND HEIGHTS, OH
Cuyahoga County
(Preliminary Data)**

	Jan. 2011	Feb. 2011	Mar. 2011	Apr. 2011	May 2011	June 2011	July 2011	Aug. 2011	Sep. 2011	Oct. 2011	Nov. 2011	Dec. 2011	Total 2011
Units in Single-Family Structures	0	0	0	0	0	0	0	0	0	0	0	0	0

**Housing Unit Building Permits for:
ROCKY RIVER, OH
Cuyahoga County
(Preliminary Data)**

	Jan. 2011	Feb. 2011	Mar. 2011	Apr. 2011	May 2011	June 2011	July 2011	Aug. 2011	Sep. 2011	Oct. 2011	Nov. 2011	Dec. 2011	Total 2011
Units in Single-Family Structures	0	0	0	0	0	0	0	3	0	6	0	0	9

**Housing Unit Building Permits for:
SEVEN HILLS, OH
Cuyahoga County
(Preliminary Data)**

	Jan. 2011	Feb. 2011	Mar. 2011	Apr. 2011	May 2011	June 2011	July 2011	Aug. 2011	Sep. 2011	Oct. 2011	Nov. 2011	Dec. 2011	Total 2011
Units in Single-Family Structures	0	0	1 _i	1 _i	1 _i	1 _i	1 _i	1 _i	1 _i	0	1 _i	0	8

Note: i = Imputed Value

**Housing Unit Building Permits for:
SHAKER HEIGHTS, OH
Cuyahoga County
(Preliminary Data)**

	Jan. 2011	Feb. 2011	Mar. 2011	Apr. 2011	May 2011	June 2011	July 2011	Aug. 2011	Sep. 2011	Oct. 2011	Nov. 2011	Dec. 2011	Total 2011
Units in Single-Family Structures	0	0	0	0	0	0	0	0	0	0	0	0	0

**Housing Unit Building Permits for:
SOLON, OH
Cuyahoga County**

(Preliminary Data)													
	Jan. 2011	Feb. 2011	Mar. 2011	Apr. 2011	May 2011	June 2011	July 2011	Aug. 2011	Sep. 2011	Oct. 2011	Nov. 2011	Dec. 2011	Total 2011
Units in Single-Family Structures	1	0	0	2	0	0	1	1	1	0	1	1	8

Housing Unit Building Permits for: SOUTH EUCLID, OH Cuyahoga County (Preliminary Data)													
	Jan. 2011	Feb. 2011	Mar. 2011	Apr. 2011	May 2011	June 2011	July 2011	Aug. 2011	Sep. 2011	Oct. 2011	Nov. 2011	Dec. 2011	Total 2011
Units in Single-Family Structures	0	0	0	0	1	0	0	0	0	0	0	0	1

Housing Unit Building Permits for: STRONGSVILLE, OH Cuyahoga County (Preliminary Data)													
	Jan. 2011	Feb. 2011	Mar. 2011	Apr. 2011	May 2011	June 2011	July 2011	Aug. 2011	Sep. 2011	Oct. 2011	Nov. 2011	Dec. 2011	Total 2011
Units in Single-Family Structures	4	7	4	5	6	11	3	4	4	8	4	4	64

Housing Unit Building Permits for: UNIVERSITY HEIGHTS, OH Cuyahoga County (Preliminary Data)													
	Jan. 2011	Feb. 2011	Mar. 2011	Apr. 2011	May 2011	June 2011	July 2011	Aug. 2011	Sep. 2011	Oct. 2011	Nov. 2011	Dec. 2011	Total 2011
Units in Single-Family Structures	0	0	1	0	0	0	0	0	0	0	0	0	1

Housing Unit Building Permits for: VALLEY VIEW VILLAGE, OH Cuyahoga County (Preliminary Data)													
	Jan. 2011	Feb. 2011	Mar. 2011	Apr. 2011	May 2011	June 2011	July 2011	Aug. 2011	Sep. 2011	Oct. 2011	Nov. 2011	Dec. 2011	Total 2011
Units in Single-Family Structures	0	0	0	0	0	1	0	0	0	2	0	0	3

**Housing Unit Building Permits for:
WALTON HILLS VILLAGE, OH
Cuyahoga County
(Preliminary Data)**

	Jan. 2011	Feb. 2011	Mar. 2011	Apr. 2011	May 2011	June 2011	July 2011	Aug. 2011	Sep. 2011	Oct. 2011	Nov. 2011	Dec. 2011	Total 2011
Units in Single-Family Structures	0	0	0	0	0	0	0	0	0	0	0	0	0

**Housing Unit Building Permits for:
WARRENSVILLE HEIGHTS, OH
Cuyahoga County
(Preliminary Data)**

	Jan. 2011	Feb. 2011	Mar. 2011	Apr. 2011	May 2011	June 2011	July 2011	Aug. 2011	Sep. 2011	Oct. 2011	Nov. 2011	Dec. 2011	Total 2011
Units in Single-Family Structures	0	0	1 _i	0	0	0	0	0	0	0	0	0	1

Note: i = Imputed Value

**Housing Unit Building Permits for:
WARRENSVILLE TOWNSHIP, OH
Cuyahoga County
(Preliminary Data)**

	Jan. 2011	Feb. 2011	Mar. 2011	Apr. 2011	May 2011	June 2011	July 2011	Aug. 2011	Sep. 2011	Oct. 2011	Nov. 2011	Dec. 2011	Total 2011
Units in Single-Family Structures	0	0	0	0	0	0	0	0	0	0	0	0	0

**Housing Unit Building Permits for:
WESTLAKE, OH
Cuyahoga County
(Preliminary Data)**

	Jan. 2011	Feb. 2011	Mar. 2011	Apr. 2011	May 2011	June 2011	July 2011	Aug. 2011	Sep. 2011	Oct. 2011	Nov. 2011	Dec. 2011	Total 2011
Units in Single-Family Structures	0	0	0	2	1	2	0	2	14	3	2	1 _i	27

**Housing Unit Building Permits for:
WOODMERE VILLAGE, OH
Cuyahoga County**

(Preliminary Data)													
	Jan. 2011	Feb. 2011	Mar. 2011	Apr. 2011	May 2011	June 2011	July 2011	Aug. 2011	Sep. 2011	Oct. 2011	Nov. 2011	Dec. 2011	Total 2011
Units in Single-Family Structures	0	0	0	0	0	0	0	0	0	0	0	0	0

Right-click this link [SOCDS Building Permits Monthly Request](#) and add it to your "Bookmarks" or "Favorites" to call monthly updates of this data request.

Click for Comma-Delimited Output

Click to Download* Output in EXCEL

* : Save the output as an Excel workbook *.xls file.

Ann Hoffsis

From: Bill Parkinson
Sent: Wednesday, May 23, 2012 1:45 PM
To: ahoffsis@dejonginc.com
Cc: lampert@strongnet.org; krupinski@strongnet.org; donnelly@strongnet.org
Subject: FW: Strongsville City SD (Cuyahoga Co.) - DRAFT Enrollment Projections

Ann,

I have reviewed the DeJong enrollment projections report and I am in acceptance of this report. If you have any questions, please let me know.

Bill

Bill Parkinson
Treasurer
Strongsville CSD
13200 Pearl Rd.
Strongsville, OH 44136
p: (440) 572-7021

From: Ann Hoffsis <ahoffsis@dejonginc.com>
To: donnelly@strongnet.org
Cc: Tracy Healy <tthealy@dejonghealy.com>, "Prenosil, Bill" <Bill.Prenosil@osfc.ohio.gov>, "Roka, Steve" <Steve.Roka@osfc.ohio.gov>, "Drerup, Melanie" <Melanie.Drerup@osfc.ohio.gov>, "Parker, Janice" <Janice.Parker@osfc.ohio.gov>, Erin Lab <elab@hammondconstruction.com>, "Hartzler, Vince" <vhartzler@hammondconstruction.com>, Jeff Tuckerman <jtuckerman@hammondconstruction.com>
Date: 05/23/2012 08:36 AM
Subject: Strongsville City SD (Cuyahoga Co.) - DRAFT Enrollment Projections

Hi Mr. Donnelly,
Attached are the draft enrollment projections report and cover letter for your review. Please let us know if you have any questions or concerns. I would be happy to review the draft report with you.
We will need acceptance of these projections, in writing, in order to expedite your future OSFC projects.
Thanks,
Ann

Ann Hoffsis, REFP
ahoffsis@dejonginc.com
DeJONG-RICHTER
614-798-8828 (main)
614-526-4167 (direct)
(See attached file: enp_rpt_strongsville_120522a_ann.pdf)(See attached file: cvr_ltr_strongsville_120522a_ann.pdf)

